

ASIA NETWORK BEYOND DESIGN 2016, **Yunlin**

October 7- 13, 2016
National Yunlin University of Science and Technology

Editorial design director _ Sunhwa Kim
Cover Design _ Tzu-wei Tsai
Editorial Design _ Yujin Kim
Printing _ Alaskaindigo

President of ANBD _ Youl Cho
Representative of ANBD, Tianjin _ Guo Jin Sheng
Representative of ANBD, Seoul _ Jeehyun Kim
Representative of ANBD, Taipei _ Guang Dah Chen
Representative of ANBD, Tokyo _ Nakajima Chie



ANBD(Asia network Beyond Design) was established in 2007 and started to have art works' exhibitions from 2008. And now I would like to celebrate the 9th anniversary date of this year together with all of you. Theme of AND 2016 is 「Between」. The concept of 「Between」 means the pluralistic relationship that is created infinitely between things, spaces, time periods, phenomena and people. 263 artists in 4 regions of Asia have submitted 1,052 pieces of their sophisticated artworks interpreting 「Between」 in their own ways by reflecting the core keyword of ANBD, 「Beyond」 onto the theme, 「Between」. Even from now on, ANBD will make more efforts for creating the identities of Asia reviving the characteristics of each region as well as seeking for the valuable exchanges by establishing a new kind of network by crossing various kinds of boundaries, such as, the scopes of creative activities, generations, countries, sex, artwork styles and whether there are any majors or not, etc. Finally, I really thank all of exhibitors and the representatives from 4 regions, that is, Seoul, Tokyo, Tianjin and Taipei for the efforts.

Youl Cho

Chairman, ANBD
Professor, College of Design
Hansung University



I would like to thank the Association of Asia Network beyond Design (ANBD) for providing National Yunlin University of Science and Technology (YunTech) with the opportunity to host an exhibition which is the main exhibition spot in Taiwan. The Department of Digital Media Design, Design College of YunTech will preserve the association's tradition by doing its best to present the theme and the spirit of ANBD 2016.

ANBD, an international association cooperatively organized by Japan, South Korea, Mainland China, and Taiwan, has a 9-year history. The main theme of the association is the construction of new design networks beyond Asian areas. Focusing on exhibitions, the association aims to create more reciprocal and meaningful opportunities for designers to interact with each other. The theme of ANBD 2016 is "In Between," which refers to revealing directly or indirectly throughout human life. ANBD 2016 will be exhibiting artworks which are beyond the art, design, and human life, and is expected to provide an interpretation of the special significance and expression of "In Between."

The annual exhibition of ANBD will be held at Seoul (South Korea), Tianjin (Mainland China), Yunlin (Taiwan), and Tokyo (Japan) from August to November in 2016. The opening ceremony will be held on October 7th at National Yunlin University of Science and Technology (YunTech). I am pleased to welcome you to this year's exhibition and sincerely wish it will be a great success.

Dr. Chun-Kan Hou

President
National Yunlin University of Science and Technology



Partake called as to lead the energy of an ideal life in the new generation, The association of Asia Network Beyond Design (ANBD) is based in Asia that construct and transcend the new networks design from each area. ANBD is started operation since 2008 and held the exhibitions in four cities (select a main exhibit place) every year. The exhibition of this year will hold in Seoul (South Korea), Changchun (Mainland China), Yunlin (Taiwan), Tokyo (Japan) from August to November, and Yunlin as the main exhibit place. When the opening ceremony of the main exhibition, the exhibitors from other regions will converge in Yunlin, then exhibitors and audiences will cultural exchanges and learning activities interdisciplinary.

The theme of this year is "in between,"that definitions of "in between"are between A and B, place at ..., moment, or quantifier..., it can be used as a verb, also meaning change, separation, and differentiation. For example, Chinese Tang dynasty poet - Bo Wang's preface - To the seventh cousin "Sky and earth between north and south, and Mountains and rivers between wind and cloud."We could know the meaning is not only very extensive and complex, but also interesting and change, it could lead the exhibitors to use imagination by a regional situation. ANBD operating committee not only look forward to the theme could show ANBD's purpose and aims "Asia, Network, Beyond, Innovation,"but also hope raises a new creative performance.

I look forward to this year's exhibition works could collect same as previous years, that works could full of personality and performance different good types, then convey the potential create energy of Asian design. I believe the included extension's international exhibition not only performance sharing of arts, culture, and creation thinking skills, but also is the area education and ethnic groups cultural exchange. Finally, I sincerely wish this will be a joyful and a memorable exhibition, and wish the exhibitors and viewers good health and happiness.

Dr. Ming-Hong Hung

Hung, Ming-Hong

Professor, Department of Cultural and Creative Industries
Dean, College of Humanities and Social Sciences
National Kaohsiung University of Applied Sciences

**ANBD, Yunlin
Participants**

Ahn So young	Gang Chunming	Jin Kyungin	Lee Younghak*	Park Haerim	Wang Meili, Li Yanmei	Zhao Fangqi
An Eunjeoung	Gao Yuan	Jing Xinyi	Lee Youngsook	Park Moonhee*	Wang Mengge	Zhao Jing
An Kanghyun	Gao Zhi	Jue Wuhaw	Leng Chunyan	Park Sohyoung	Wang Nan	Zhao Yanfei
Andou Saki	Gong Jing	Jung Jaewoo	Leng Yidan	Park Soyoung	Wang Nannan	Zhao Yucheng
Bae Jinseok	Gong Yoonjung	Kakizaki Kaho	Li Keyi	Park Sunmi	Wang Shuhuei	Zhi Xiaoxiang
Bang Kyunghan*	Goto Masanobu	Kang Hyundae*	Li Li	Qiu Yang	Wang Yuexin, Cheng Jie,	Zhong Lei
Cao Jinggang	Guan Qiqi	Kang Sunghae*	Li Muye, Li Zheng, Lan Tian, Feng zhao	RA Jeeyoung*	Zhou Jiajia, Wu Yumeng	Zhu Yiyue
Chang Feiman	Guo Yingyi	Kasai Noriyuki	Li Shaoze	Ren Chunlian	Won Myungsim	
Chang Heemok	Ha Seungah	Kikugawa Tensho	Li Tianchen	Ren Yu	Won Yunkyung	
Chen Bolin	Ha Sooknyung*	Kim Heegyun	Li Yao, Liang Qingsong	Rha Sooim*	Woo Hyunri	
Chen Chingyi	Han Eunhye	Kim Hyunsoo	Li Zhaoxing	Rhee Myungsoog	Wu Chongchong	
Chen Guangdah	Han Heejung	Kim Jaehong	Liang Yunqian, Li Ray	Rhee Taelim	Wu Hsiaoling	
Chen Guoyiyen	Han Liying	Kim Jeehyun	Liao Chinghua	Saito Naomasa	Wu Tingting, Sun Wanting, Shen Juan	
Chen Hsiaofei	Han Youngho*, Ha Bbutie*	Kim Jiyoung	Lin Yujin	Sano Tohru	Wu Yan	
Chen Hsiaofeng	Hanawa Daisuke	Kim Kyunghan*	Liu Liwei	Seo Dongjin*	Wu Yaru	
Chen Juyuan	Harada Akira	Kim Mihyun	Liu Meiling	Seo Dongkeun*	Xin Shizhen	
Chen Kan	Hayashi Mitsuo	Kim Seungmin	Liu Xiaochu	Shen Lu	Xue Ming	
Chen Ponien	Hong EunJung	Kim Sohyun	Liu Xiaojia, Yang Yalin, Pan Yue	Shen Xiaoping	Xue Yan	
Cheng Chienhua	Hong Iltae	Kim Soonja*	Liu Xiaotong	Shi Chengxin	Yang Chaofu	
Cheng Honglei	Hong Yeobjung*	Kim Sunhwa	Liu Yaxin	Shim Bokseob	Yang Chuang	
Cheon Sanghyeon	Hong Youngjin*	Kim Yongrhip*	Lu Lin	Shimoguchi Miho	Yang Fang	
Chiou Shunying	Hsieh Weiher	Ko Kaijen	Lu Shihyun	Shin Janghee	Yang Leen*	
Cho Baemoon	Hsu Hsiaoping	Kong Yang	Luo Yuan	Shin Kyeok	Yang Shiuanruei	
Cho Youl	Hsu Huimi	Koo Miran	Lyu Kyungwon	Shin YoonJhin*	Yang Xiaoying	
Choi Jongran	Hu Nan	Kuo Asyu	Ma Yanxia	Shinohara Toshiro	Yang Yu	
Choo Kyungim*	Huang Shuya	Kuo Yuling	Ma Zhenyuan, Xu Jiazi	Shu Chunchieh	Yeh Moli, Joo Keyan	
Chou Ijhen	Huang Wentsong	Kwak Chulan*	Makino Takumi	Shur Kiheun	Yeom Hyesoo*	
Chun Jaehyun*	Hun Jihye*	Kwon Soonhwan	Maruyama Matsuhiko	Song Gyaeyoung	Yi Wonje*	
Chun Jinhie*	Hung Huilun	Kwon Sungha	Minamikawa Shigeki	Song Jungyu*	Yin Dashun	
Chung Byunghun	Huo Mingxuan, Fan Chenming,	Lai Huiju	Miura Keiko	Song Shan, Mu Qing	Yoo Boomee*	
Chung Jaewoo	Zhao Ziyang, Hou Siyu	Lai Yichen	Momose Hiroyuki	Su Yafen	Yoo Dongkwan*	
Chung Min	Ichikura Yoroko	Lee Byungsuk	Moon Jungmook	Suefusa Mamoru	Yoo Hyunah*	
Cui Xiongzhi, Wang Zhongrui, Chen Jiaxin	Im Minjung	Lee Jaehee	Moon Sungjun	Suh Seungyeon*	Yoon Yeojong	
Dong miao	Im Namsook	Lee jieun	Moon Sunyoung	Sun Debo	Yue Lin	
Dong Mingzhe, Chen Chao, Li Shan	Ishii Toshiwo	Lee Junga*	Nakajima Chie	Sun Han	Zhang Huiying	
Du Wen	Isohata Hiroshi	Lee Jungjin*	Nakamura shotaro	Takahashi Nobumasa	Zhang Lizhu	
Duan XiaoMing	Ito Namiko	Lee Jungsoon*	Narita Yoshihiro	Tsai Chengji	Zhang Puhua	
Fan Hsiwen	Jain Jhinping, Chen Yiljun, Cheng Yachi	Lee Minjeong	Noh Seungcock	Tsai Janson	Zhang Shijia	
Fan Jieqiong, Fan Jiayu	Jeon Jongchan	Lee Minsun*	Obara Issei	Tsai Sungte	Zhang Xi	
Feng Wenjun, Cheng Jingyu	Jeon Seunghyook	Lee Miyong	Oh Cheolhoon	Tsutsumi Emico	Zhang Xin, Zhang Ying	
Fujieda Yumiko	Jeon Shinjong	Lee Sangeun	Oh Sechul	Um Sohee	Zhang Xingchen	
Fukuda Ichiro	Jeong Yoona*	Lee Suyoung	Oshima Naoki	Wang Danhong	Zhang Xingchen, Li Youkai	
Furukawa Naho	Jiang Yuting, Liu Yang, Sun Ting	Lee Yongphill	OuYang Yi	Wang Liang	Zhang Yiran	



Ahn Soyoung
 Duksung Women's University
 circular I 6-04
 ahnsy@duksung.ac.kr



An Eunjeoung
 Konkuk University
 Equation
 andante86@naver.com



An Kanghyun
 Heriot-Watt University
 Micro Gap I
 kkangttang@gmail.com



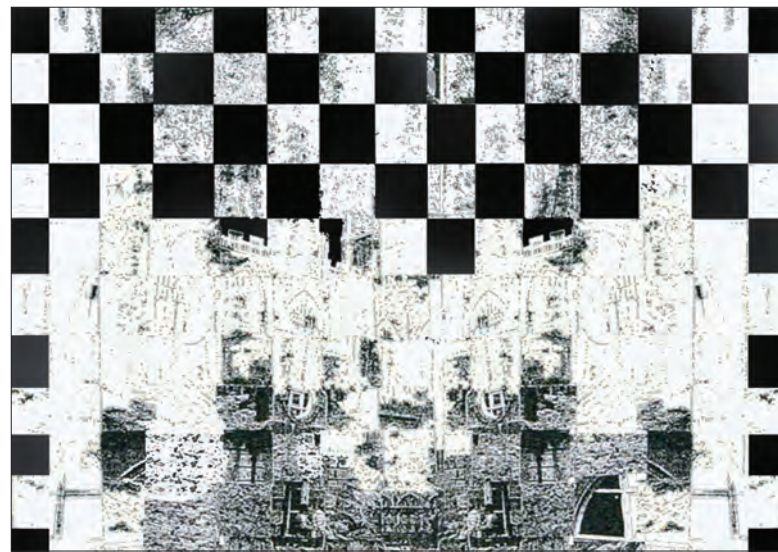
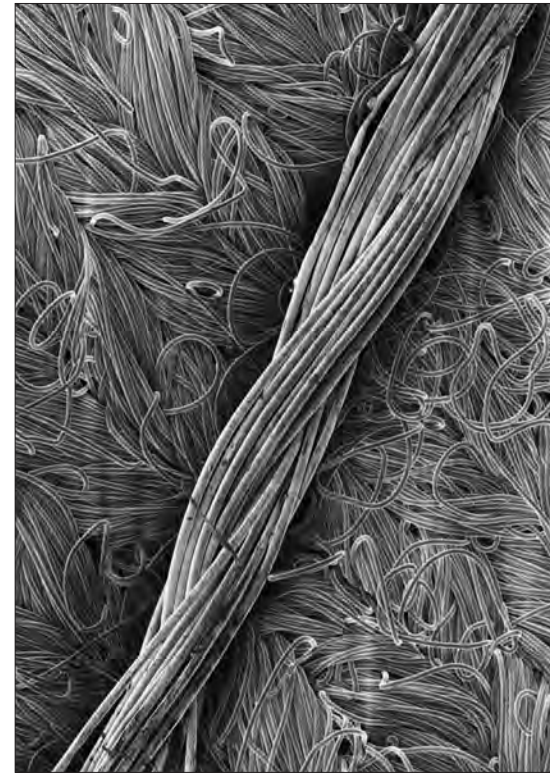
Andou Saki
 Photographer
 In Between 04
 sssakko413@gmail.com



Bae Jinseok
 Akita University of Art
 MA3
 b20182000@gmail.com



Bang Kyunghan
 Sangmyung University
 The indefinite plan 2016-T
 bang@smu.ac.kr





Cao Jingang
Tianjin Academy of Fine Arts
Faciese
441533386@qq.com



Chang Feiman
Mingchuan University
Red Composition II
feiman168@gmail.com



Chang Heemok
Hansung University
the Light in Between
heemok@hotmail.com



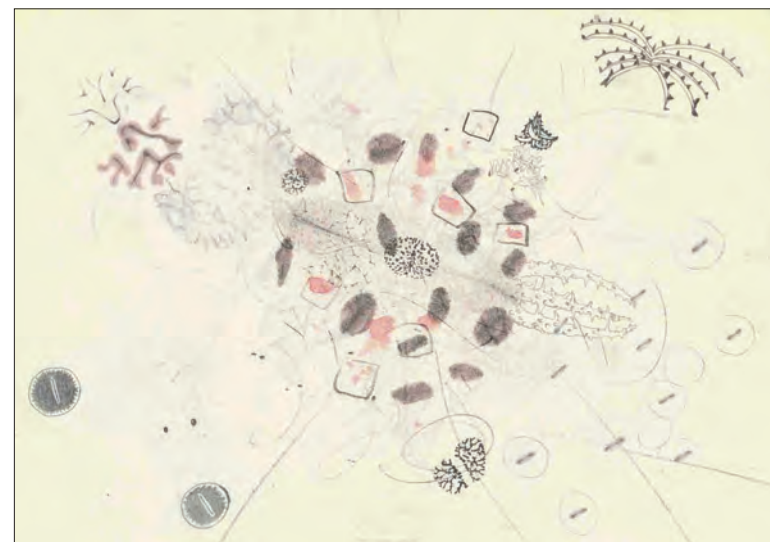
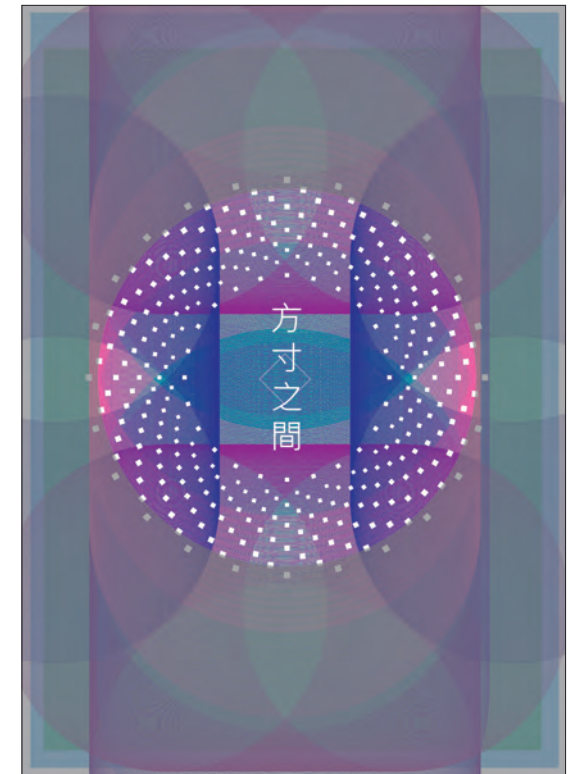
Chen Bolin
Tianjin Academy of Fine Arts
Ich Freud
645918506@qq.com



Chen Chingyi
Chungyuan Chirstian University
innerness / space
jingyi@cycu.edu.tw



Chen Guangdah
National Yunlin University of Science and Technology
Between 02
gd196478@yahoo.com.tw





Chen Guoyiye
Asia University
Health care system is imbalanced
rcom926@gmail.com



Chen Hsiaofei
Jinwen University of Science and Technology
Rationality & Sensibility (II) Spacing
fay-chen@just.edu.tw



Chen Hsiaofeng
Asia University & National Kaohsiung Normal University
Sociology of the human
kennysss@ms49.hinet.net



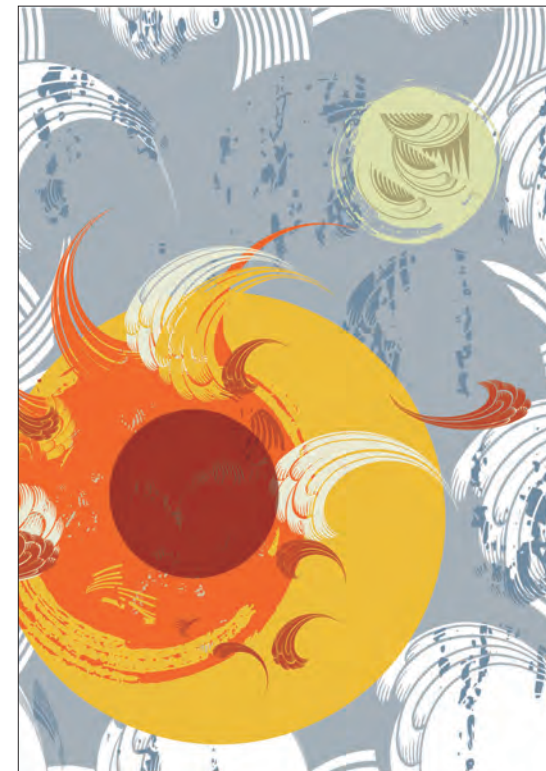
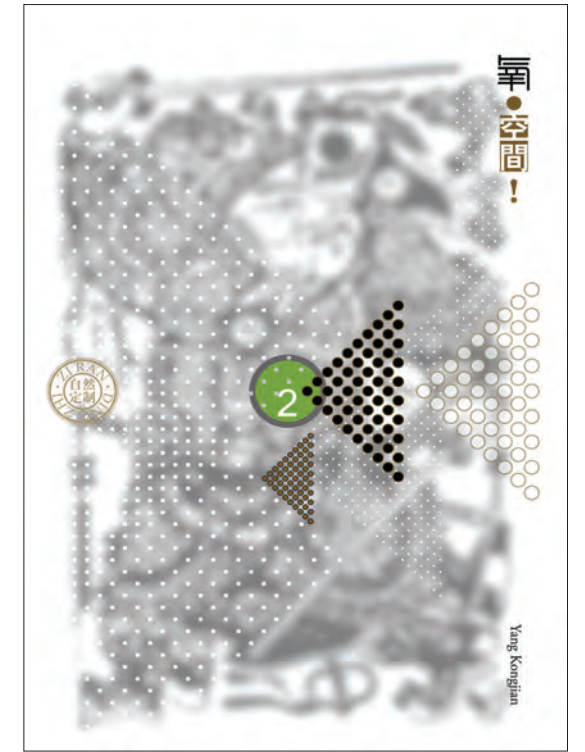
Chen Juyuan
Jinwen University of Science and Technology
The universe
jullian@just.edu.tw



Chen Kan
Tianjin Academy of Fine Arts
SPACE
chenkan104@sina.com



Chen Ponien
Mingchuan University
Escape Into Reality
cpn1973@yahoo.com.tw





Jain Jhinping, Chen Yijyun, Cheng Yachi
National Kaohsiung University of Applied Sciences
Soy milk gives you super power, healthy like God. (Red/Mazu)
kcshine2003@yahoo.com.tw



Cheng Chienhua
Asia University
Between cave and swell
P66149@gmail.com



Cheng Honglei
Tianjin Foreign Studies University
On the journey
247361398@qq.com



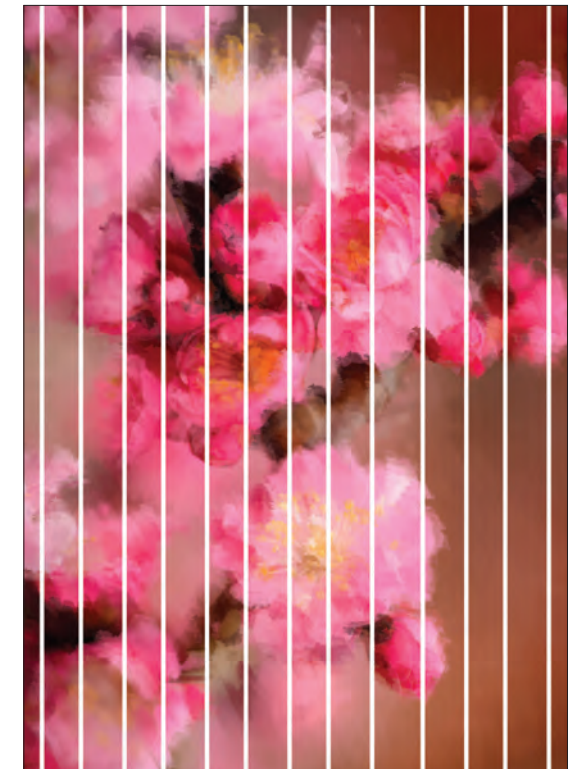
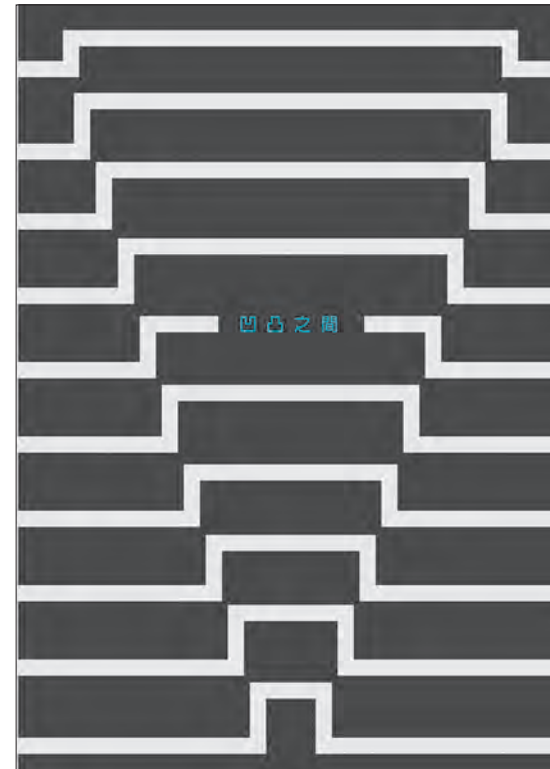
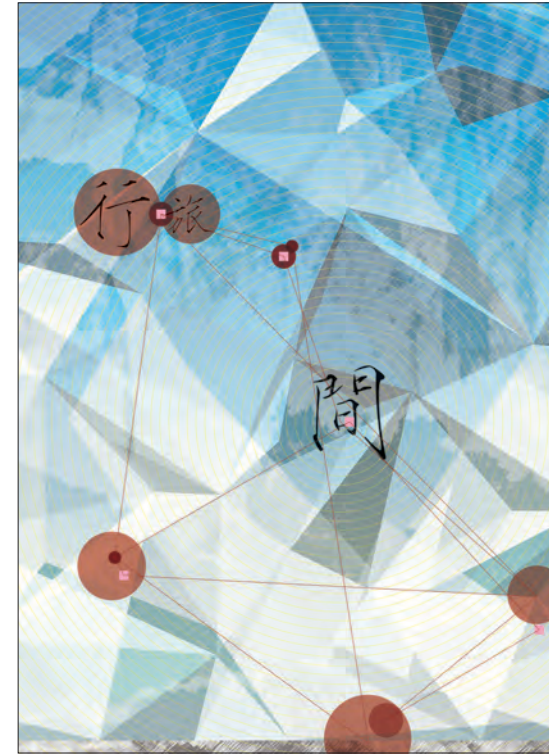
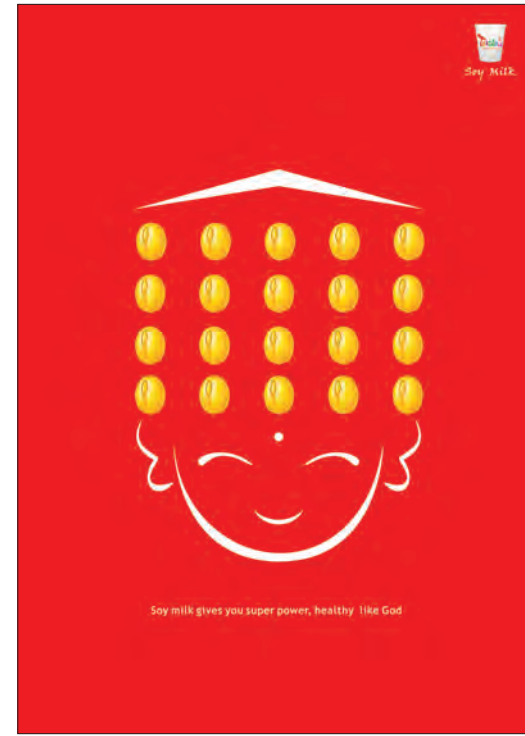
Cheon Sanghyeon
Kaywon University
The World : Sympathy
joynav@naver.com



Chiou Shunying
National TaiChung University of Science and Technology
warm up your room 3
sychiou@nutc.edu.tw



Cho Baemoon
Keimyung University
National Flower of Taiwan: Plum Blossom
zovaemoon@naver.com





Cho Youl
 Hansung University
 the cabin space, Yunlin
 choyoul@hansung.ac.kr



Choi Jongran
 Pyeongtaek University
 TUMSAI (The interval space form) IV
 hanjrchoi@hanmail.net



Choo Kyungim
 Sangmyung University
 Alleyway series IV
 kamichoo@smu.ac.kr



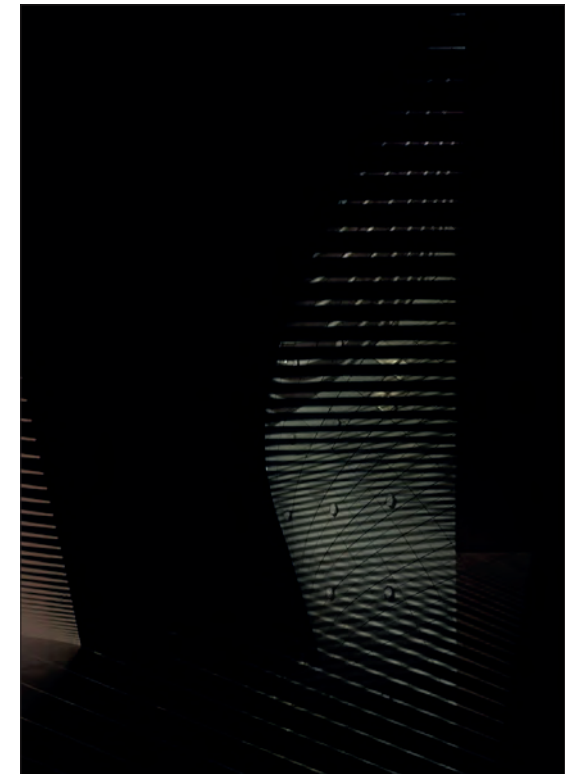
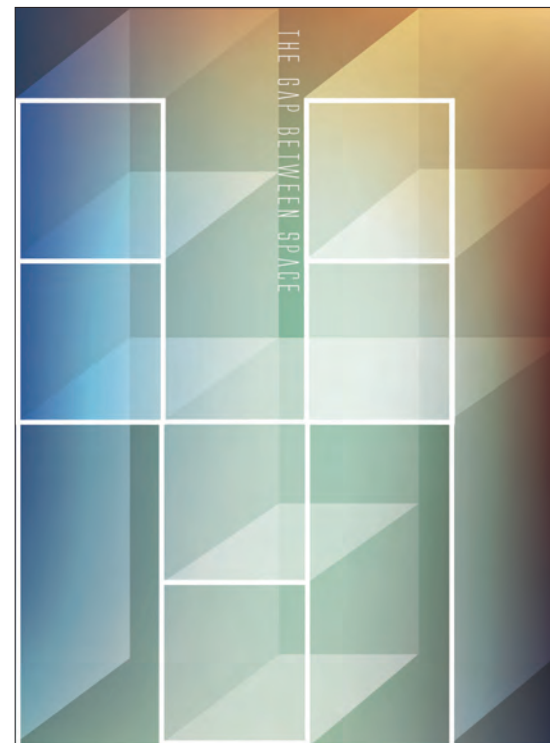
Chou Ijhen
 Chungyu Institute of Technology
 Rhythm 2
 chou814@gmail.com



Chun Jaehyun
 Sangmyung University
 Between Hangul and Color -4
 jay3848@hanmail.net



Chun Jinhie
 Sangmyung University
 Teum-T
 chj1117@smu.ac.kr





Chung Byunghun
Sungshin Women's University
Night View 16-05
artbh0000@naver.com



Chung Jaewoo
Ansan University
anbd 2016 T
iovyx@naver.com



Chung Min
Hoseo University
Day+Night=Myth
skyprop@gmail.com



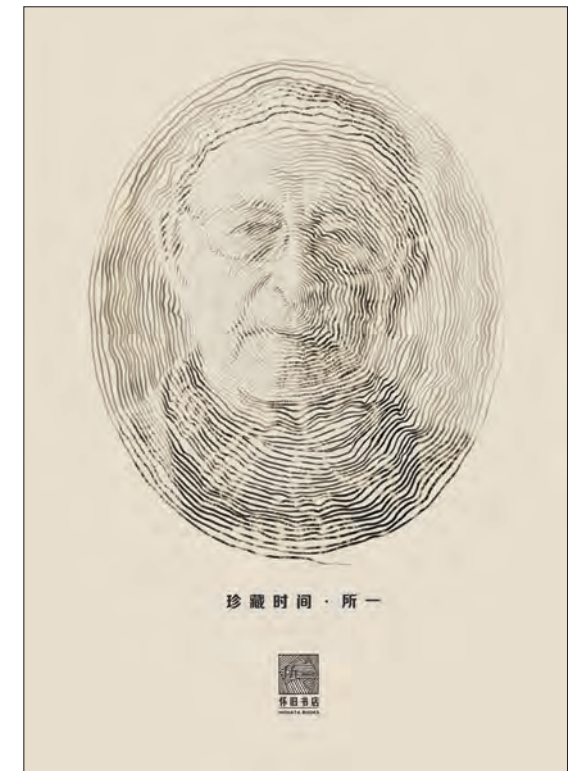
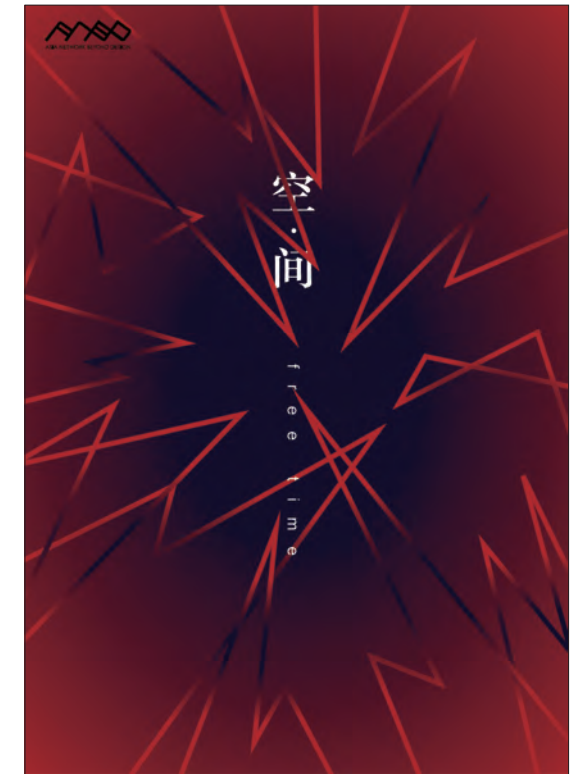
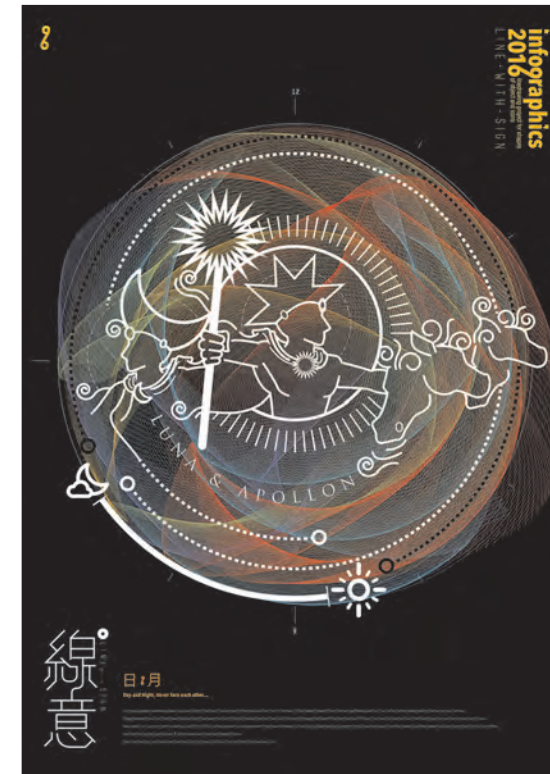
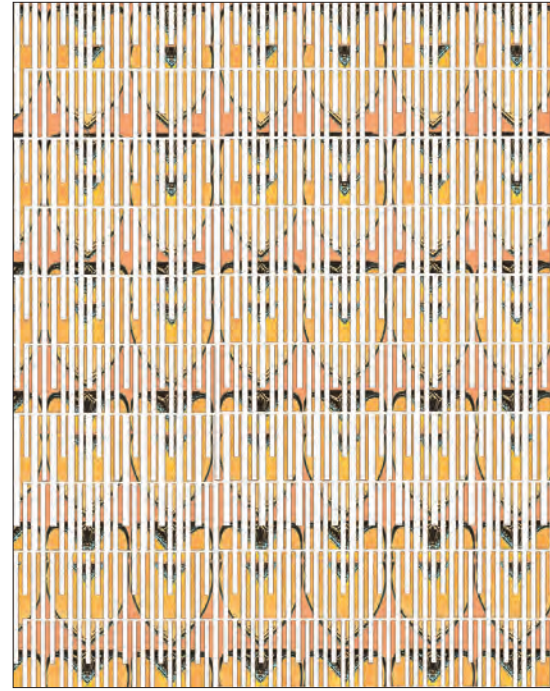
Cui Xiongzi, Wang Zhongrui, Chen Jiaxin
Jilin University of Arts
Love and ham
lucky1005005@163.com / wzr1277@163.com / 378703445@qq.com



Dong miao
Tianjin Academy of Fine Arts
free time
474860537@qq.com



Dong Mingzhe, Chen Chao, Li Shan
Tianjin Academy of Fine Arts
Time Treasure
913617011@qq.com

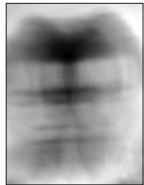




Du Wen
Tianjin Academy of Fine Arts
SOPHISTICATION
shuisheng1209@163.com



Duan Xiaoming
Tianjin Academy of Fine Arts
Between the rotary
1017154704@qq.com



Fan Hsiwen
Dayeh University
time, space, and time space I
tncelny@gmail.com



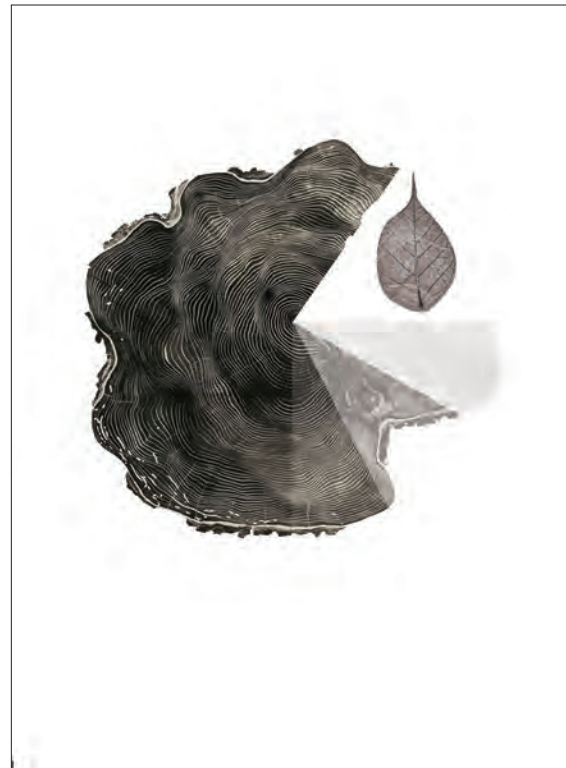
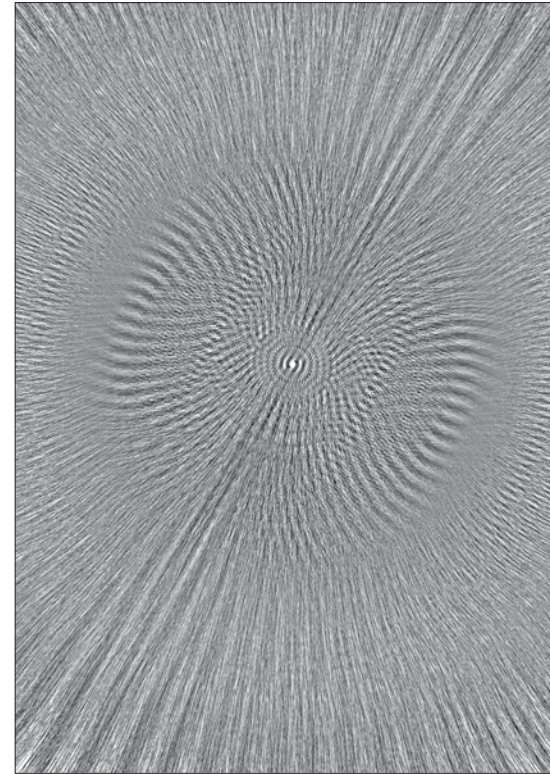
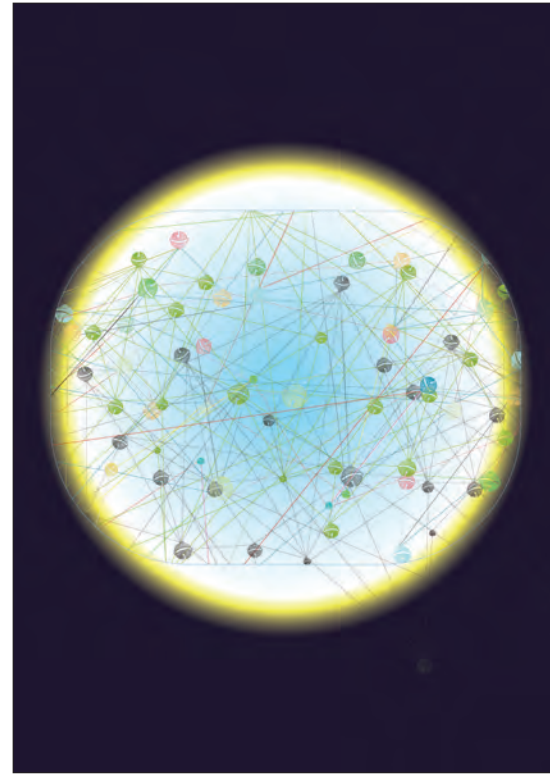
Fan Jieqiong, Fan Jiayu
Tianjin Academy of Fine Arts
Hello, Joker
304296361@qq.com



Feng Wenjun, Cheng Jingyu
Tianjin Academy of Fine Arts
Abandon the form get the Essence of Art
15522556223@163.com



Fujieda Yumiko
Tamagawa University
FIGS
yumiko@art.tamagawa.ac.jp





Fukuda Ichiro
 Kyoritsu Women's University
 [ji to Ma -3] Which side is seen?
 ihukuda@kyoritsu-wu.ac.jp



Furukawa Naho
 Tokyo Gakugei University
 saku -MA-
 a150519f@st.u-gakugei.ac.jp



Gang Chunming
 Yuncheng University
 Between Languages 4
 minipig99@126.com



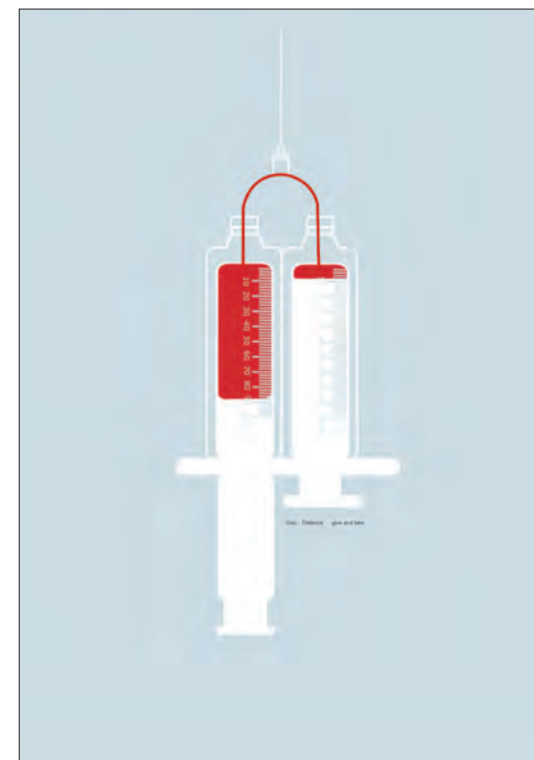
Gao Yuan
 Academy of Fine Arts Hengshui University of Hebei
 Tell with understand
 115388243@qq.com



Gao Zhi
 Sichuan University
 Interaction
 wismen@qq.com



Gong Jing
 Tianjin Academy of Fine Arts
 ROOM ASTRICK
 sesshomaru33@126.com





Gong Yoonjung
Korea National University
Architecture Work
ellisabetta@ycos.co.kr



Goto Masanobu
Chiba University
MA-JUSYOKU 162 T
gotoh@faculty.chiba-u.jp



Guan Qiqi
Tianjin Academy of Fine Arts
Word's romantic history
386997863@qq.com



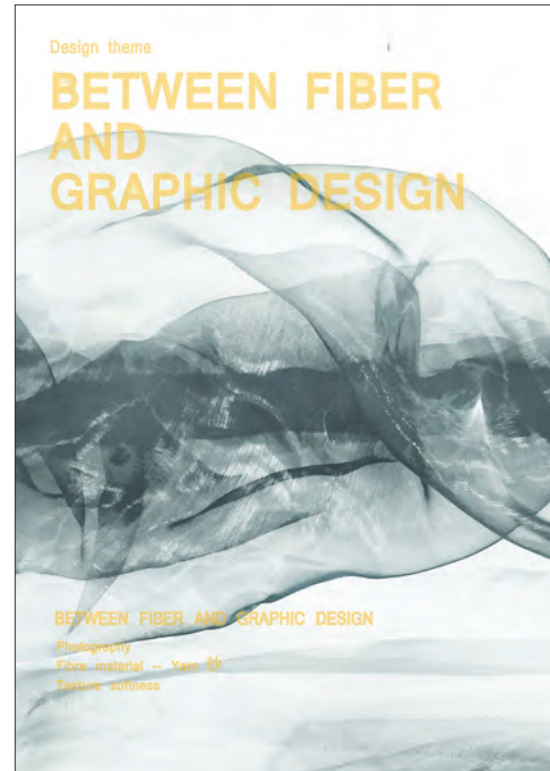
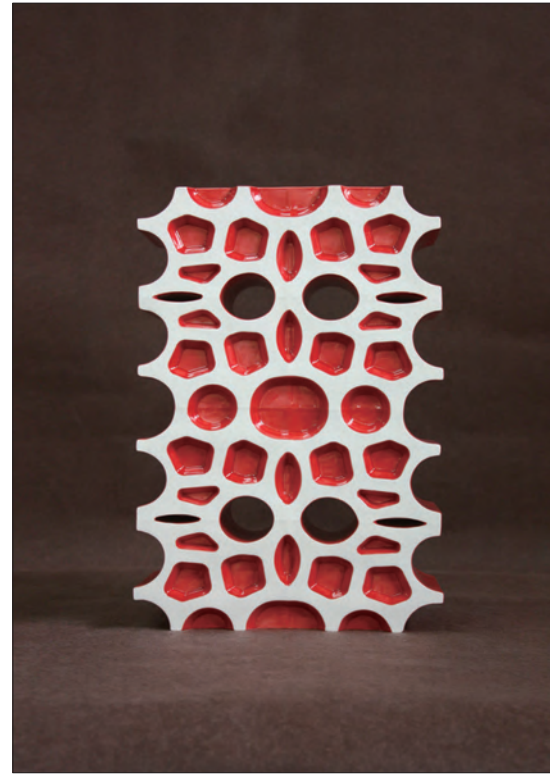
Guo Yingyi
Tianjin Academy of Fine Arts
fiber and graphic
369216900@qq.com



Ha Seungah
Ewha Women's University
RELATION
haasa@nate.com



Ha Sooknyung
Sangmyung University
ZIZ 4
snha3430@nate.com





Han Eunhye
 Donga University
 The Gap
 ehh57@hanmail.net



Han Heejung
 Keimyung University
 Interlude
 july27@kmu.ac.kr



Han Liying
 Tianjin Academy of Fine Arts
 Light and Shade
 371052213@qq.com



Han Youngho, Ha Bbutie
 Sangmyung University
 Children's Room Part III
 yhhan@smu.ac.kr, love_petit@naver.com



Hanawa Daisuke
 Hokkaido University of Education
 Connection with the Philosophy 3
 hanawa.daisuke@s.hokkyodai.ac.jp



Harada Akira
 Hokkaido Ceramic Artists Association
 Between Silver and Mad
 akharada3@gmail.com





Hayashi Mitsuo
 Tamagawa University
 MA-Meteor shower No.3
 hayashi30@art.tamagawa.ac.jp



Hong Eunjung
 Dongyang Mirae University
 Be-Tween ver.04
 ehong821@paran.com



Hong Iltae
 Ulsan University
 agitation 4
 hue0603@hanmail.net



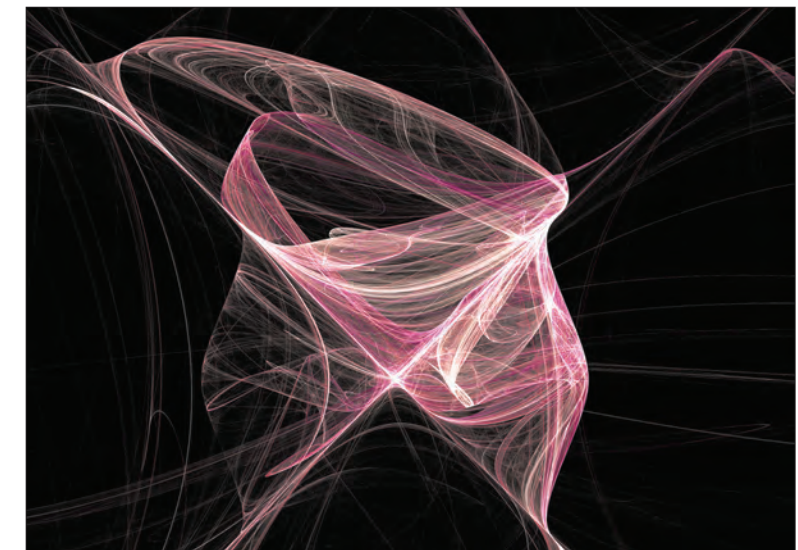
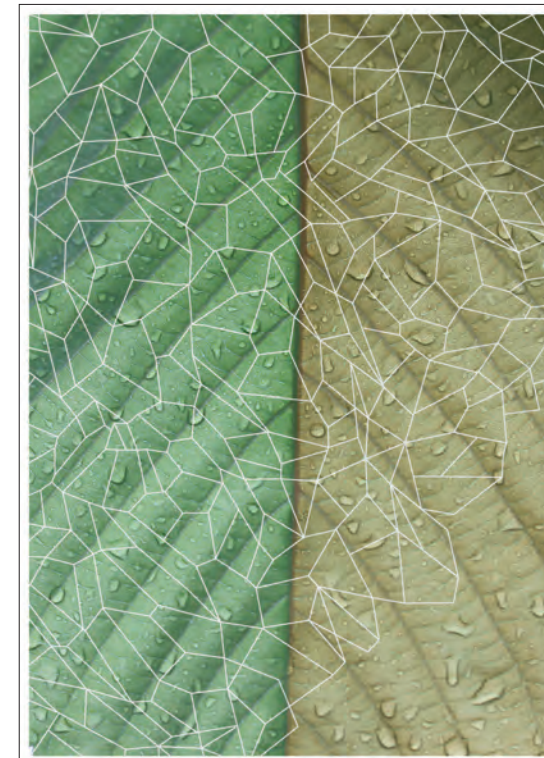
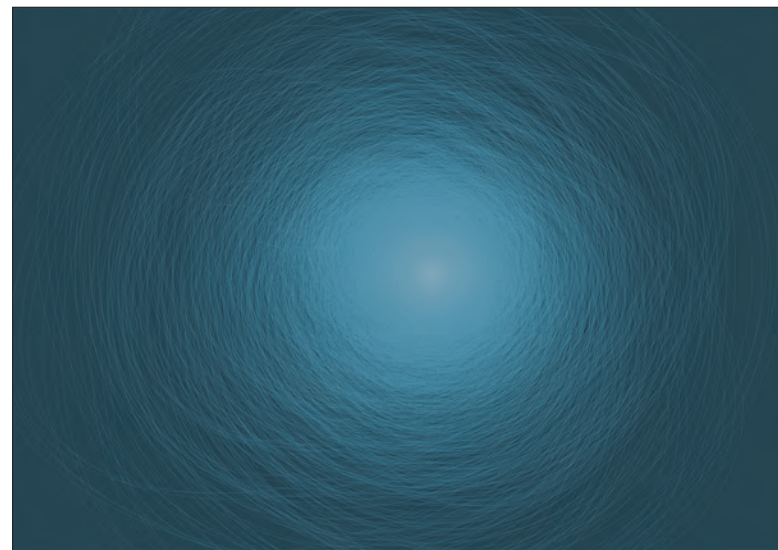
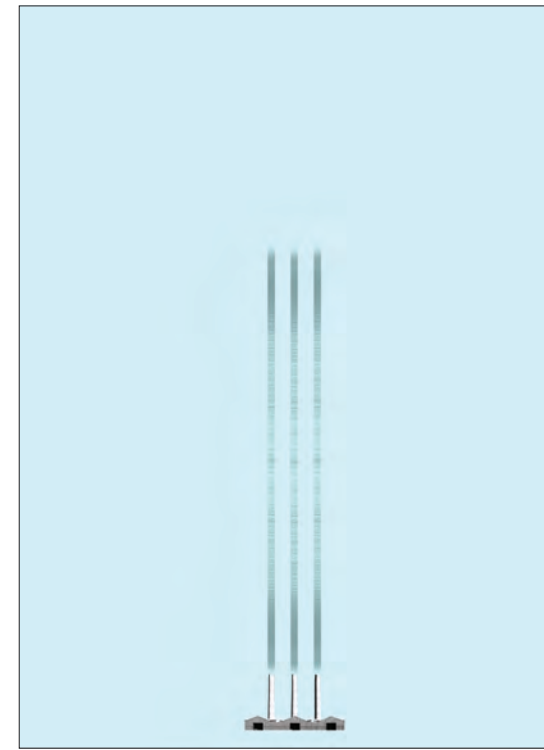
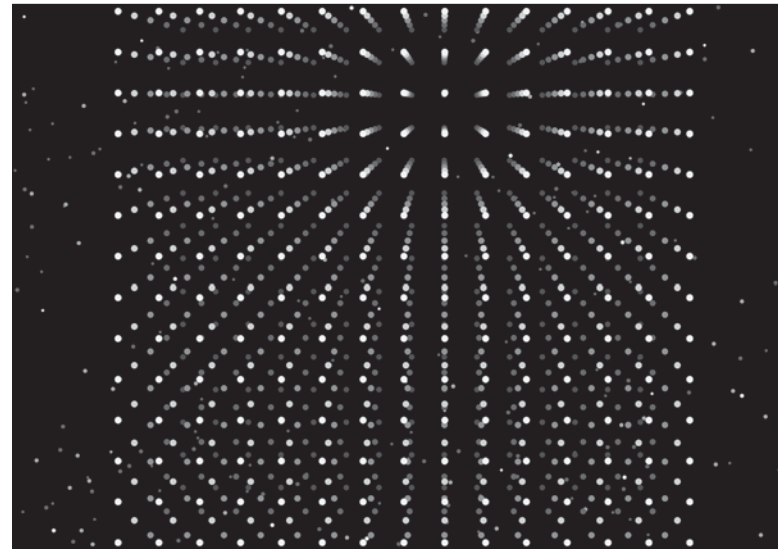
Hong Yeobjung
 Sangmyung University
 Gap
 cemic-hong@hanmail.net



Hong Youngjin
 Sangmyung University
 dream
 youngin@smu.ac.kr



Hsieh Weiher
 Asia University
 SKETCH 3
 weiher66@yahoo.com





Hsu Hsiaoping
National Kaohsiung Normal University
BETWEEN YOU & LINE/LIE
b0987380904@gmail.com



Hsu Huimi
Chengshu University
SPACE-2
cafebearinparis@yahoo.com.tw



Hu Nan
Tianjin Academy of Fine Arts
The lab youth hostel association series poster3
hunan295987969@qq.com



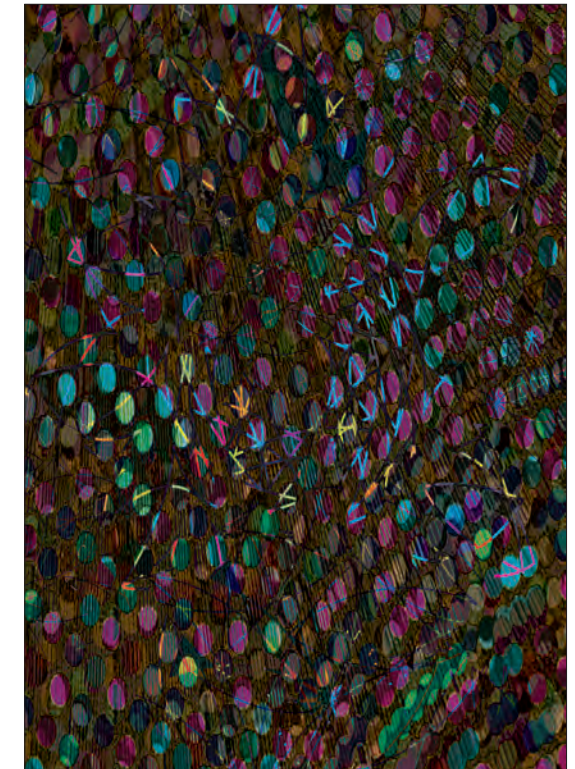
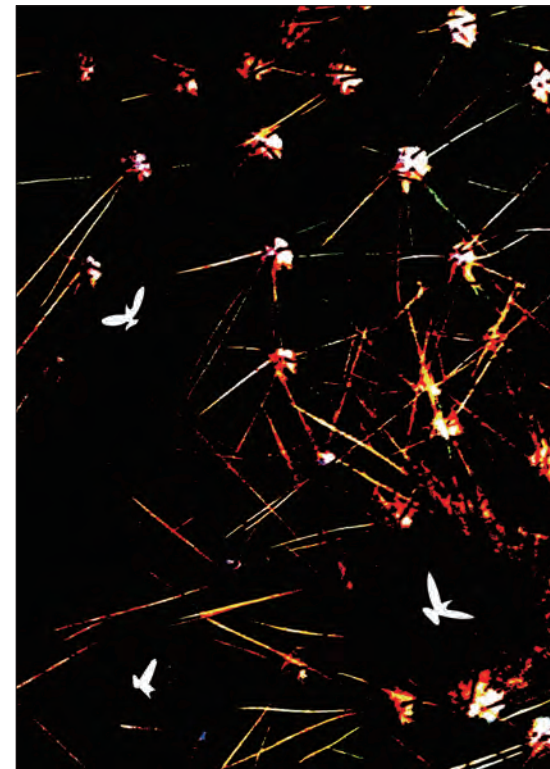
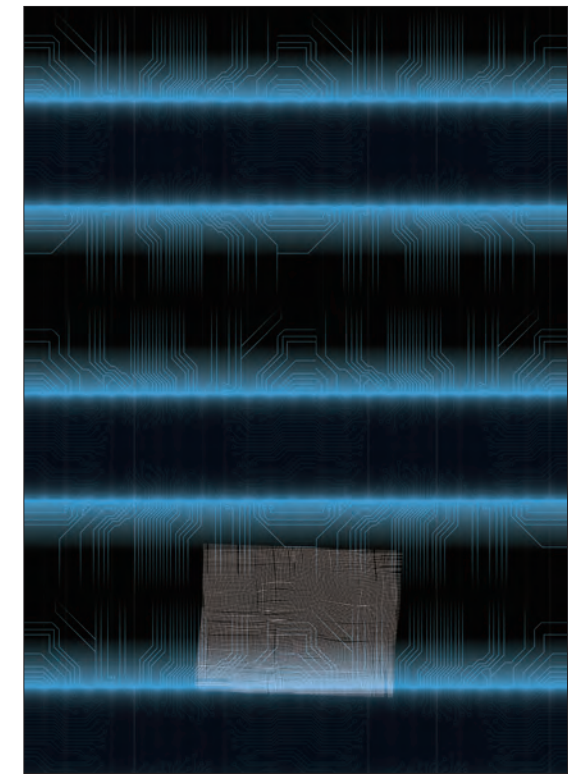
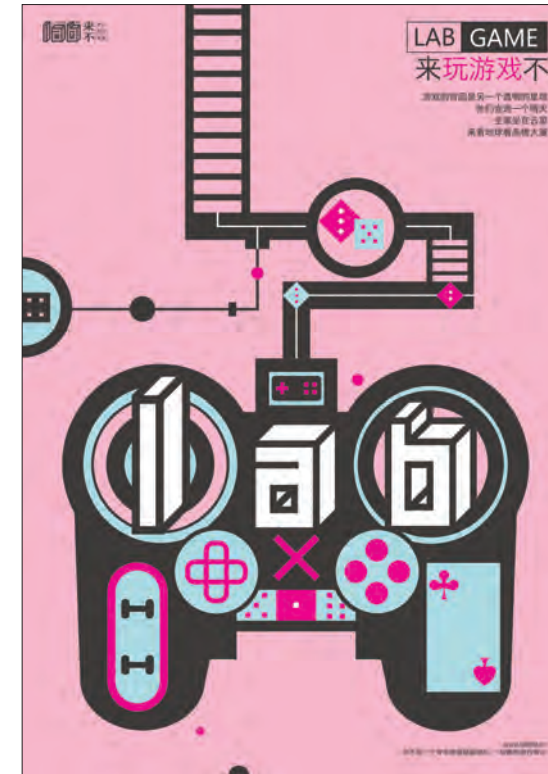
Huang Shuya
National Donghwa University
No matter how high mountains, clouds can not hinder fly
ssyy@mail.ndhu.edu.tw



Huang Wentsong
Chungyuan Christian University
Wound
wjhuang612@gmail.com



Hun Jihye
Sangmyung University
One - beside
fiberart514@hanmail.net





Hung Hui-lun
Chengshiu University
Roaming in Crowds III
forest@gcloud.csu.edu.tw



Huo Mingxuan, Fan Chenming, Zhao Ziyang, Hou Siyu
Jilin University of Arts
Culture between China and Japan-Festival
1010583343@qq.com / 771708847@qq.com / 948492883@qq.com



Ichikura Yoroko
Atelier Bi
Die Zauberflöte
atelier.bi.ichikura@gmail.com



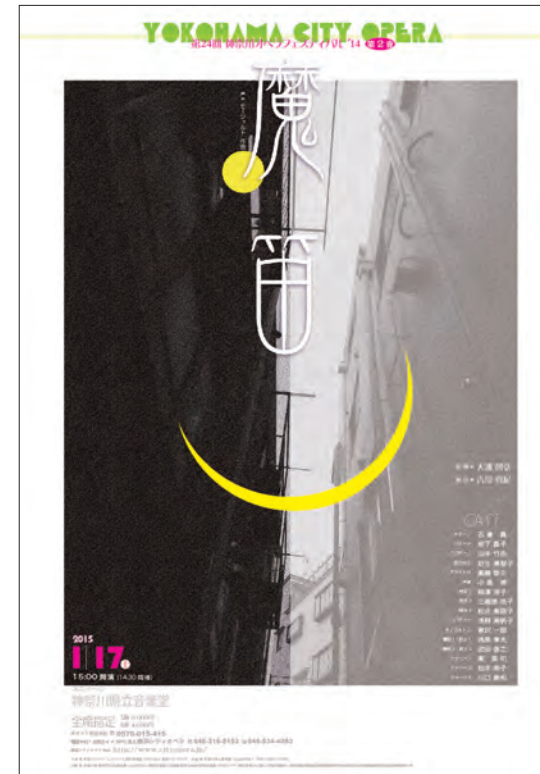
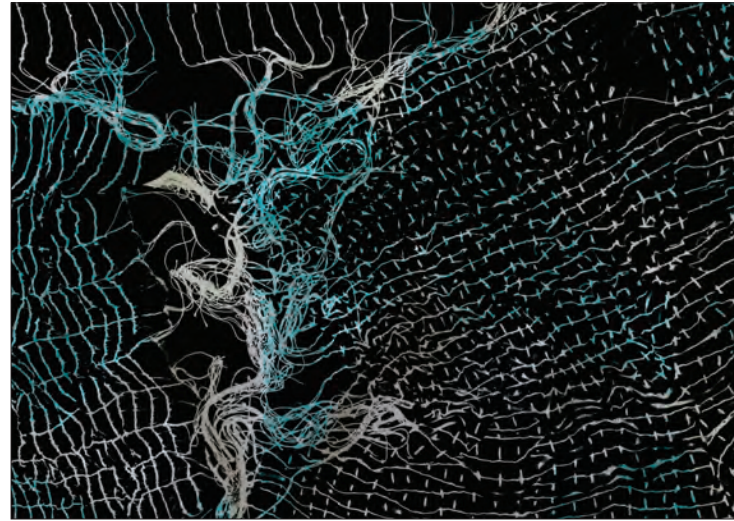
Im Minjung
Seowon University
SPACE
vivianim@hanmail.net



Im Namsook
Daegu University of Education
Look up!
chartotte@hanmail.net



Ishii Toshiwo
Tokyo Gakugei University
rapport-3
toshiwo@u-gakugei.ac.jp





Isohata Hiroshi
 Tokyo Gakugei University
 Church
 raiu.kecco_bomb@ezweb.ne.jp



Ito Namiko
 Tamagawa University
 mirror image IV
 n.ito@art.tamagawa.ac.jp



Jeon Jongchan
 Hansung University
 Composition 2016-RC06
 jcheon45@hansung.ac.kr



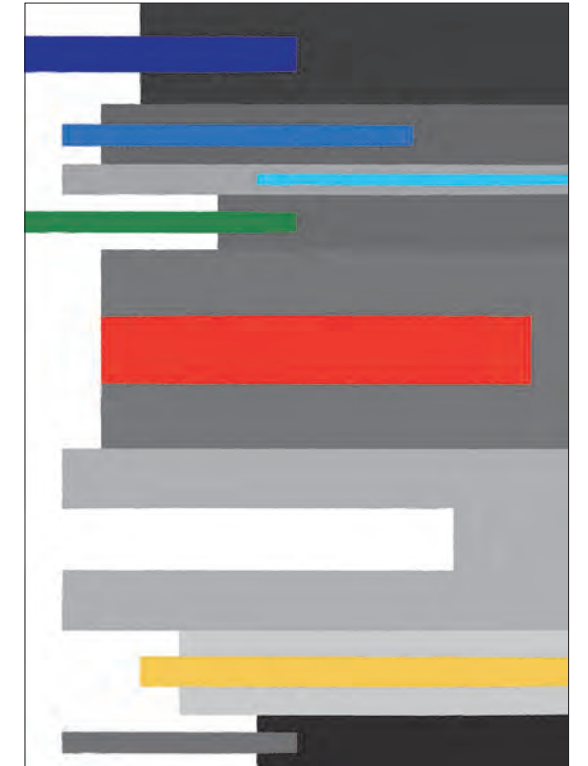
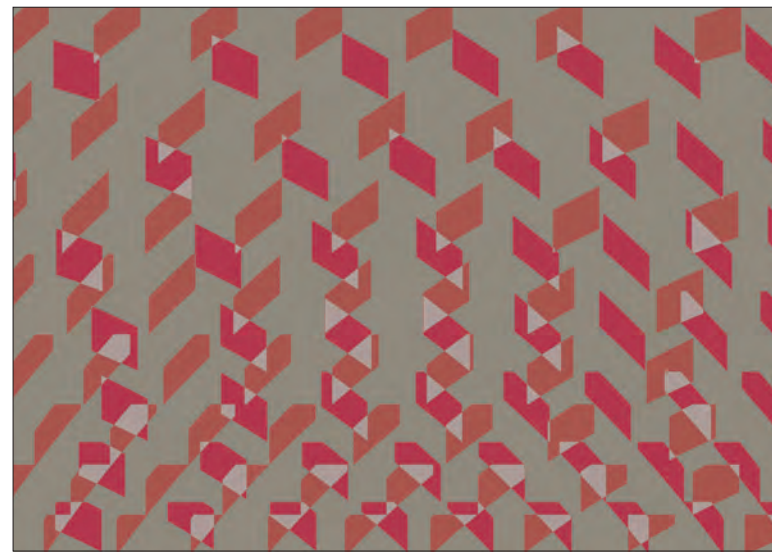
Jeon Seunghyok
 Kyushu Sangyo University
 space
 jeon@ip.kyusan-u.ac.jp



Jeon Shinjong
 Hansung University
 Reflection Space
 art-chun@hanmail.net



Jeong Yoona
 Sangmyung University
 Between Colors_Background
 jyn5071@smu.ac.kr





Jiang Yuting, Liu Yang, Sun Ting

Jilin University of Arts
TRADITIONAL AND MODERN
972554718@qq.com / 945742400@qq.com / 2045884006@qq.com



Jin Kyungin

Ansan University
Between Now and Past Going Forward
seouljin@ansan.ac.kr



Jing Xinyi

Tianjin Academy of Fine Arts
relationship
181880366@qq.com



Jue Wuhaw

National Formosa University
Light Cloud
juewuhaw@yahoo.com.tw



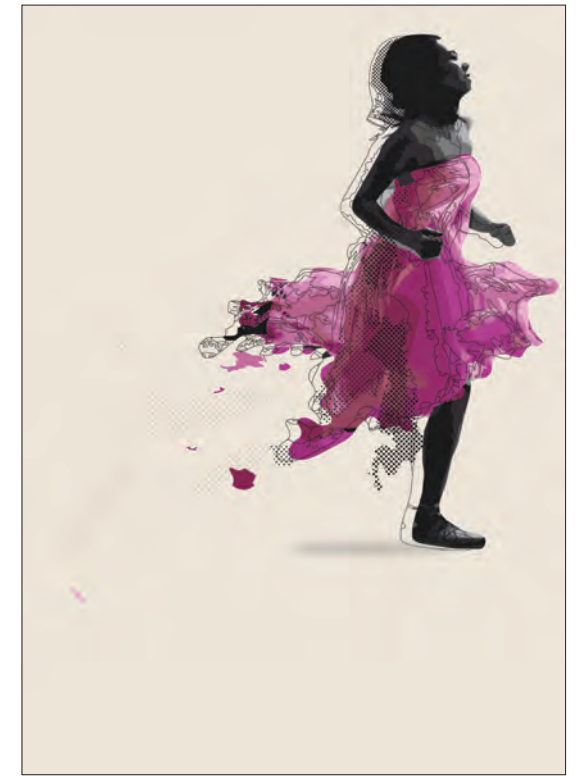
Jung Jaewoo

Dongduk Women's University
espace_m_4
rhuhan@dongduk.ac.kr



Kakizaki Kaho

Tokyo Gakugei University
Between the green onion
cafo161cm@gmail.com





Kang Hyundae
Sangmyung University
Aqua Vase 1606003
kanghd17@hanmail.net



Kang Sunghae
Sangmyung University
Door of hope
shkang@smu.ac.kr



Kasai Noriyuki
Nihon University
Space and Separation
kasai.noriyuki@nihon-u.ac.jp



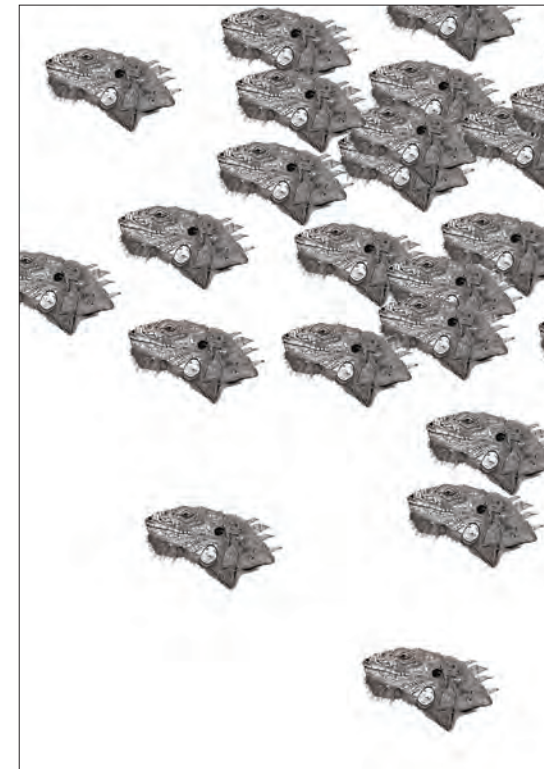
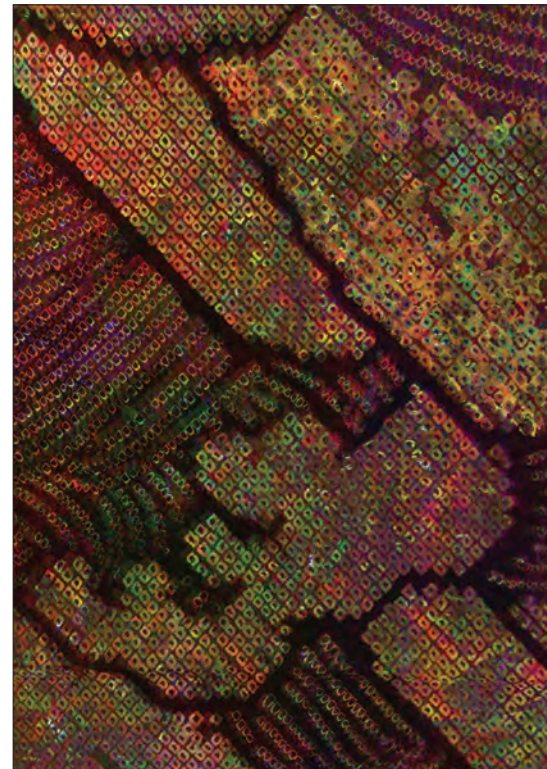
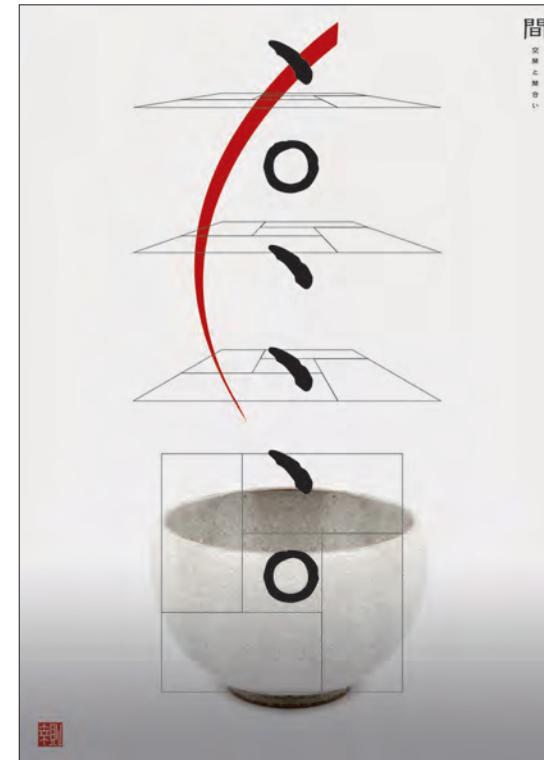
Kikugawa Tensho
Tokyo Gakugei University
iguana4
b152509k@st.u-gakugei.ac.jp



Kim Heegyun
Sangmyung University
the ceamic wall 4
guniya@hanmail.net



Kim Hyunsoo
Seoul Women's University
Soul Basket IV
hyunkim82@hotmail.com





Kim Jaehong
 Chungbuk National University
 The Waters Chased Him As He Fleed
 jkim@cbnu.ac.kr



Kim Jeehyun
 Hansung University
 Between+Between 2
 jeehyun0208@hanmail.net



Kim Jiyong
 Suwon Women's University
 custom
 sma810@naver.com



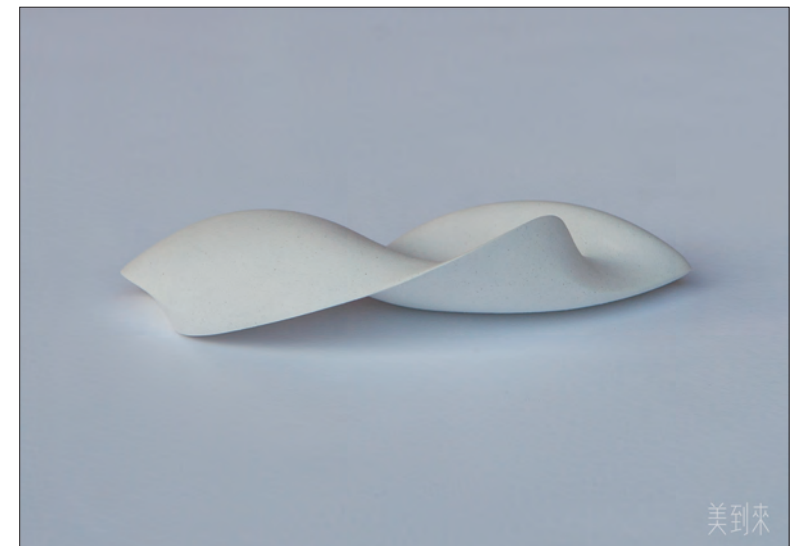
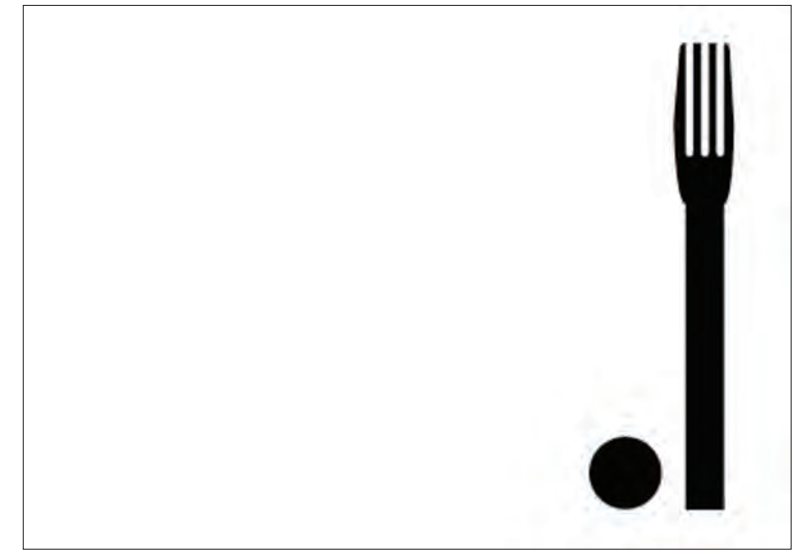
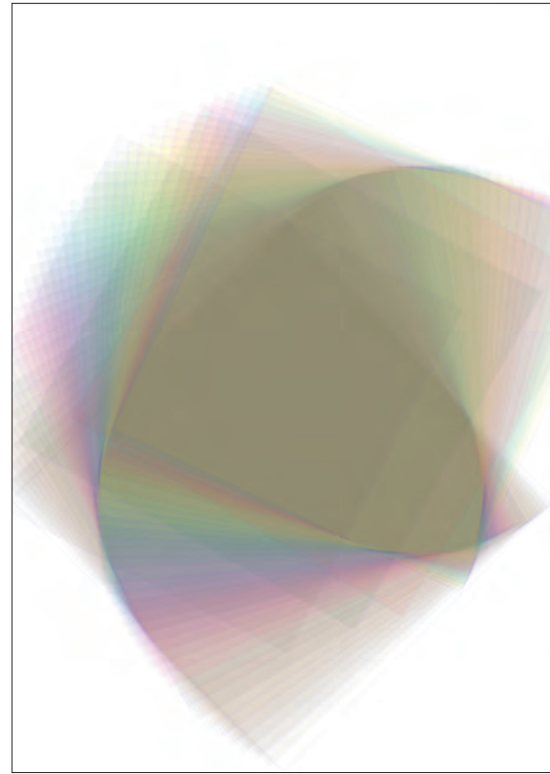
Kim Kyunghan
 Sangmyung University
 Love, 2016-8
 kyungkim@smu.ac.kr



Kim Mihyun
 Sangmyung University
 fork and plate
 clara1008@naver.com



Kim Seungmin
 Hanbat National University
 Midore_Form201604
 hiiiiik@naver.com





Kim Sohyun
 Hongik University
 Sleepless 04
 catcher@naver.com



Kim Soonja
 Sangmyung University
 Time for myself
 sjkim@smu.ac.kr



Kim Sunhwa
 Hansung University
 IN BETWEEN 2016 - Yunlin
 sunspace99@hanmail.net



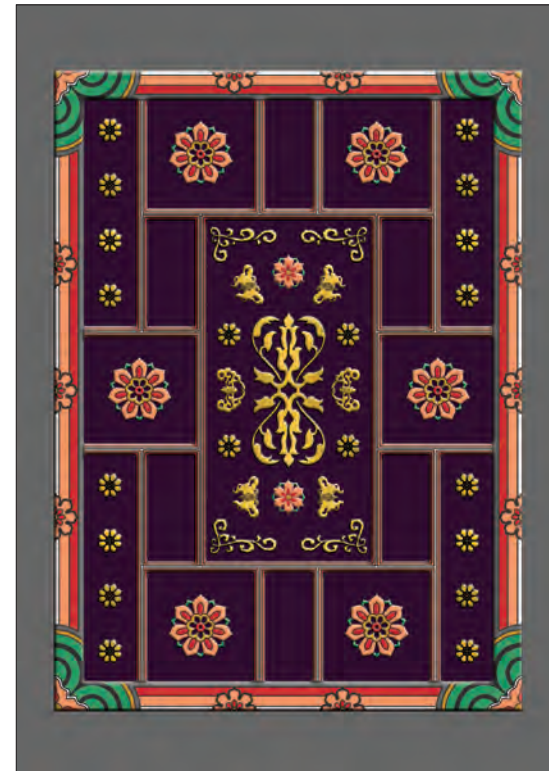
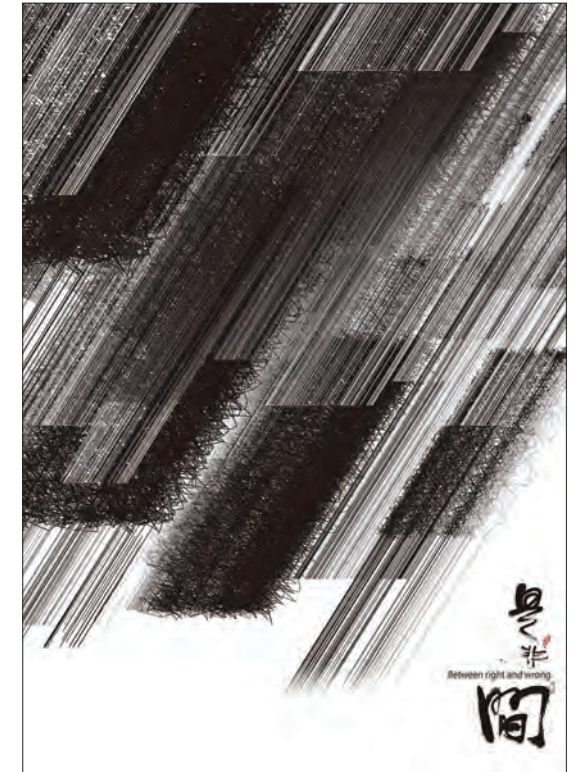
Kim Yongrhip
 Sangmyung University
 Playing with Traditional Window Pattern 16-03
 kyr5501@smu.ac.kr



Ko Kaijen
 National Taichung University of Education
 Between right and wrong
 kook888@yahoo.com



Kong Yang
 Tianjin Academy of Fine Arts
 Between you and me
 124944514@qq.com





Koo Miran
 Kyungnam University
 imaging 4
 miho749@uok.ac.kr



Kuo Asyu
 Jinwen University of Science and Technplogy
 Cloud
 kaku@just.edu.tw



Kuo Yuling
 National Kaohsiung Normal University
 Ideographs-Dust
 kuo10@yahoo.com.tw



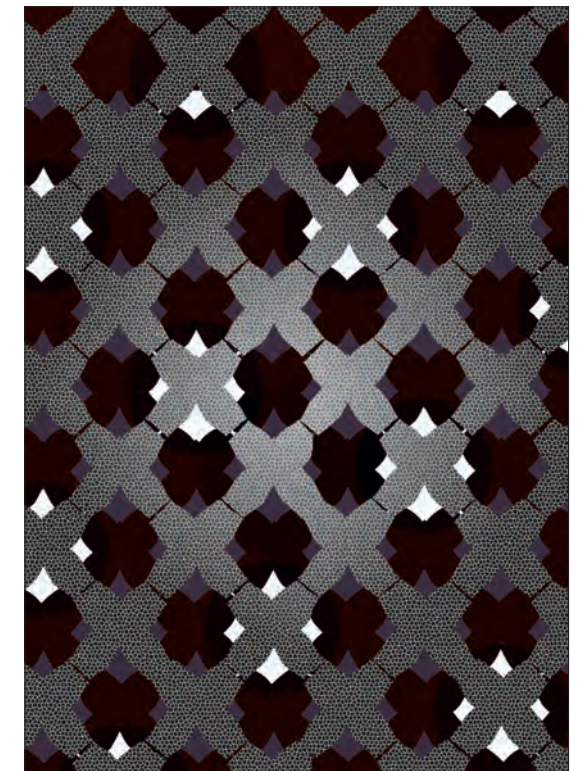
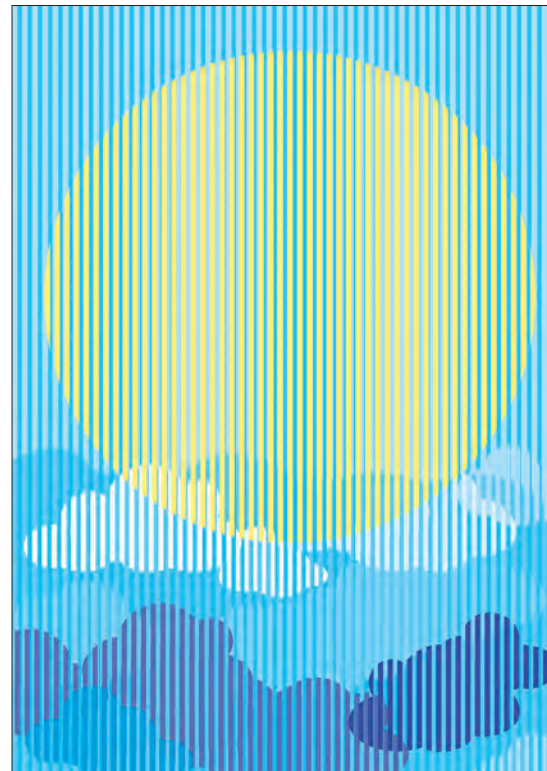
Kwak Chulan
 Sangmyung University
 [Bezit] Smile Monkey wall clock
 info@chulankwak.com



Kwon Soonhwan
 Paichai University
 Between_Y-CUBE
 factoryma@pcu.ac.kr



Kwon Sungha
 Dongduk Women's University
 between_tw_2016
 sungha2000@hotmail.com





Lai Huiju
Tamkang University
Between the Senses-Nose
huiju.lai@gmail.com



Lai Yichen
Tainan University of Technology
City and Traffic
ycyclai@gmail.com



Lee Byunguk
Daejin University
SORROW
bsleoni@hanmail.net



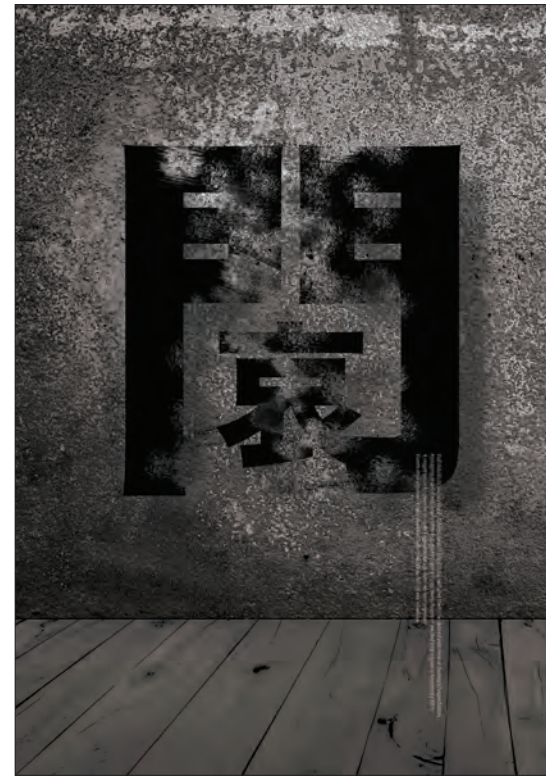
Lee Jaehee
Masan Jungang High School
2016 LE Art Furniture 04
1979jaehee@naver.com



Lee Jieun
Hokkaido University of Education Sapporo
Cherry trees in Sapporo
lee.jieun@s.hokkyodai.ac.jp



Lee Junga
Sangmyung University
both of us
texjung@naver.com





Lee Jungjin
Sangmyung University
Paper Work III
jjlee@smu.ac.kr



Lee Jungsoon
Sangmyung University
The Work 2016 - III
jslee@smu.ac.kr



Lee Minjeong
Rasara Fashion College
Confined Space
almj4435@gmail.com



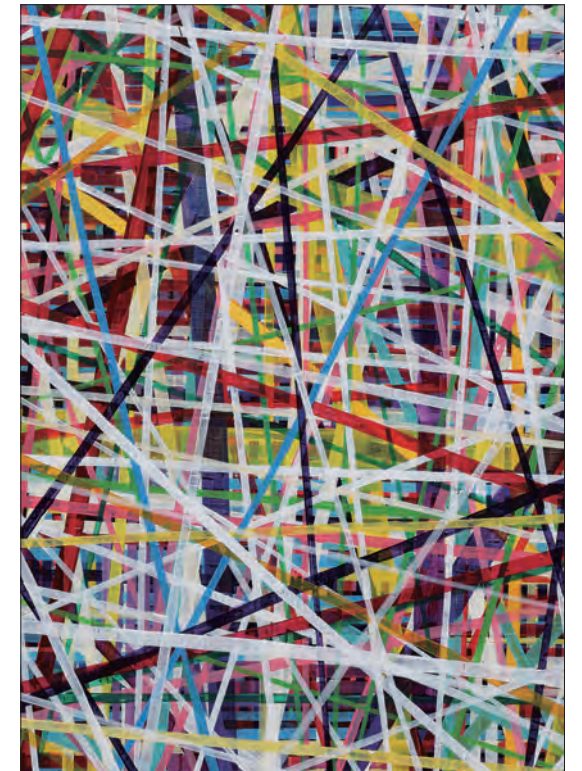
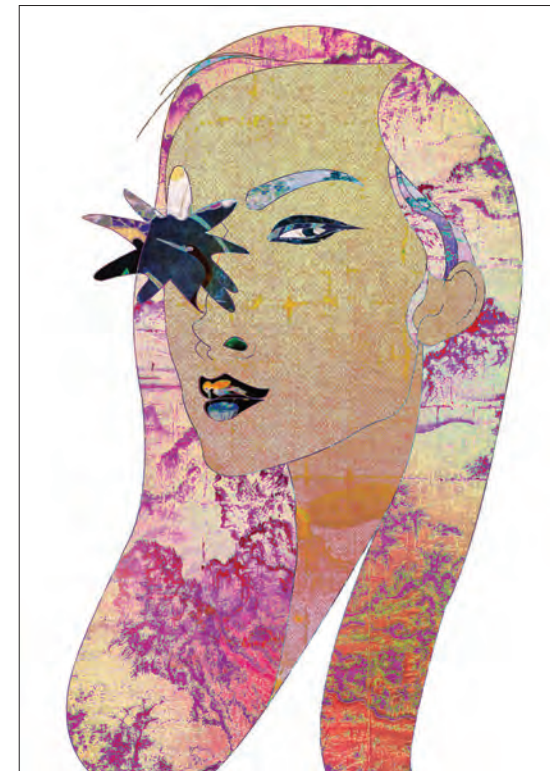
Lee Minsun
Sangmyung University
gaze
minsun@smu.ac.kr



Lee Miyong
Hokkaido University
Between Space
leemiyong@eng.hokudai.ac.jp



Lee Sangeun
Sangmyung University
Weaving Time 20162
lse1213@smu.ac.kr





Lee Suyoung
 Hongik University
 The light of skin
 iamsylee@gmail.com



Lee Yongphill
 Namseoul University
 3 Pebbles-shaped Vases
 yongphill@hanmail.net



Lee Younghak
 Sangmyung University
 vestige 2016-4
 leeyh@smu.ac.kr



Lee Youngsook
 Gangneung Wonju National University
 TO MY SON, JAY
 younger@gwnu.ac.kr



Leng Chunyan
 Tianjin Academy of Fine Arts
 Tutu Huahua3
 xiaoleng92@163.com



Leng Yidan
 Tianjin Academy of Fine Arts
 The stone brings good luck
 lengyidan@cloud.com





Li Keyi
Tianjin Academy of Fine Arts
MOMENT
517169869@qq.com



Li Li
Tianjin Academy of Fine Arts
The rhythm of art and design
lilidixinxiang@126.com



Li Muye, Li Zheng, Lan Tian, Feng Zhuo
Jilin University of Arts
CLOSER BUT FANTHER
379505501@qq.com / 415416351@qq.com / 364582284@qq.com



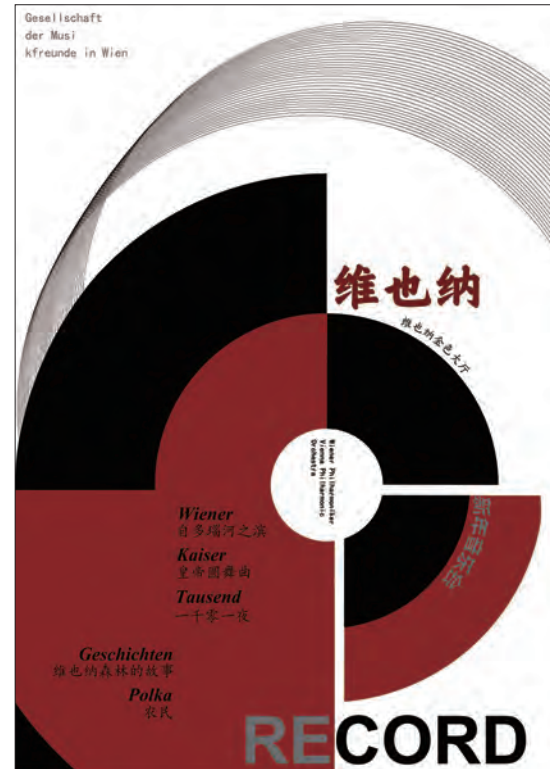
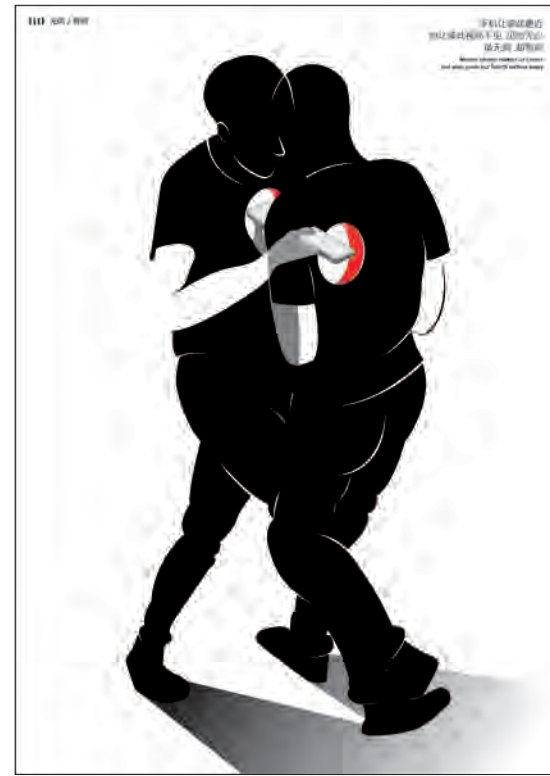
Li Shaoze
Tianjin Academy of Fine Arts
Listen
936660907@qq.com



Li Tianchen
Tianjin Academy of Fine Arts
Between us(Languages)
361344549@qq.com



Li Yao, Liang Qingsong
Hebei University of Technology
Spring
458712747@qq.com / 1qs458712747@qq.com





Li Zhaoxing
Tianjin Academy of Fine Arts
Drifting away-ourselves
291995265@qq.com



Liang Yunqian, Li Ray
Tianjin Academy of Fine Arts
Cantonese and Chinese culture
Inot0213@126.com



Liao Chinghua
National Donhwa University
Between 2 (Overtum Calligraphy)
jack12178@gmail.com



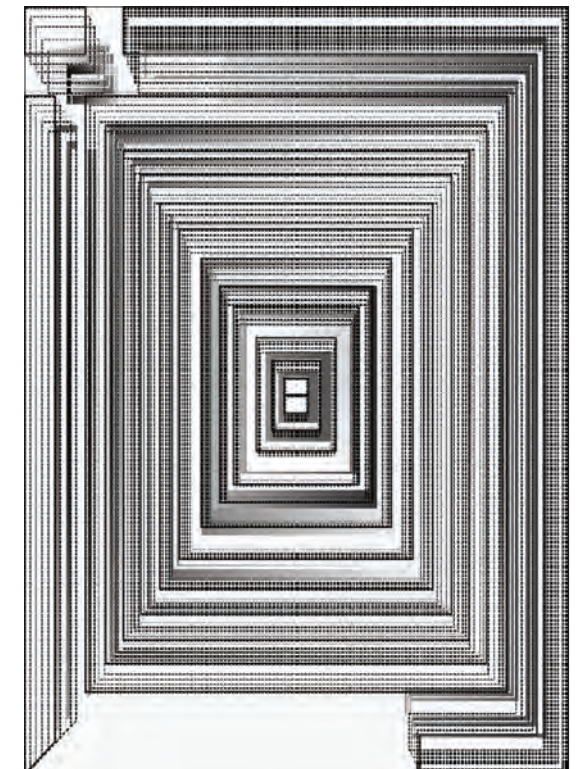
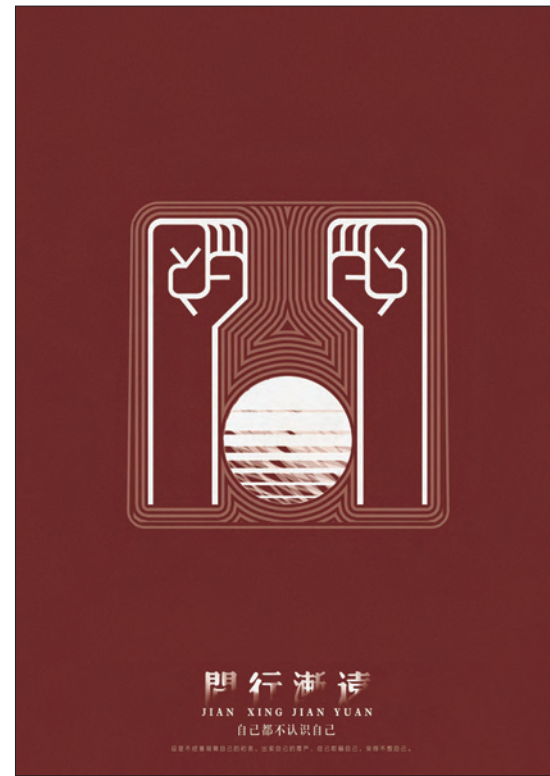
Lin Yujin
Chengshiu University
overreliance
rookies37@gmail.com



Liu Liwei
Dalian Medical University
Cloud & mountain font imagery
9934007@qq.com



Liu Meiling
Tianjin Academy of Fine Arts
PROCESS
278057972@qq.com





Liu Xiaochu
Tianjin Academy of Fine Arts
contradiction
372054771@qq.com



Liu Xiaojia, Yang Yalin, Pan Yue
Jilin University of Arts
Between
1004497421@qq.com / 717780837@qq.com / 1017481875@qq.com



Liu Xiaotong
Tianjin Academy of Fine Arts
West Word East Paint
522129061@qq.com



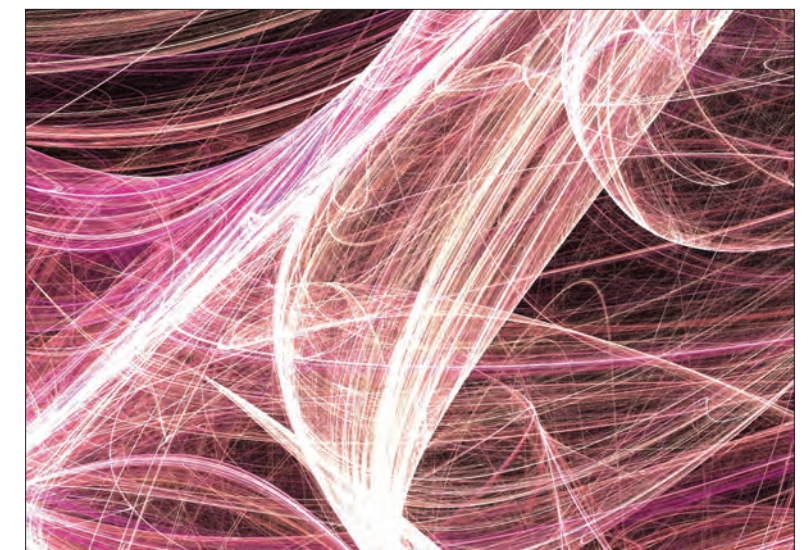
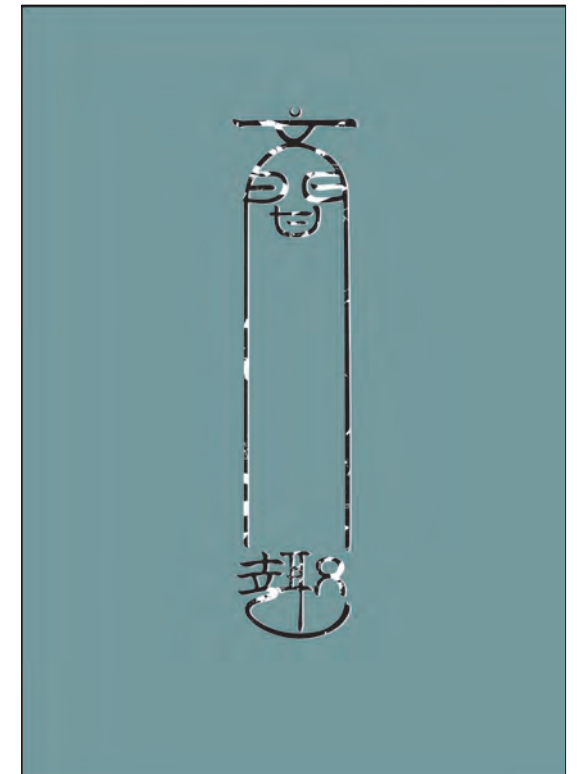
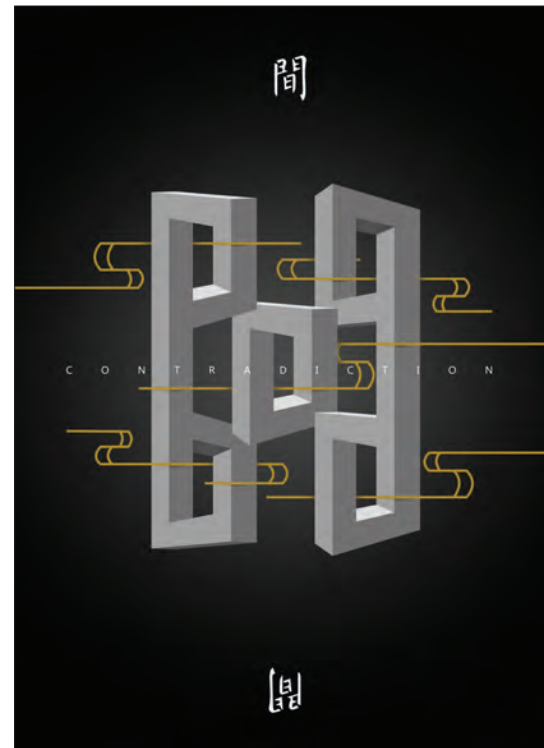
Liu Yaxin
Tianjin Academy of Fine Arts
When?How?
963191323@qq.com



Lu Lin
Tianjin Chengjian University
Between
380675998@qq.com



Lu Shihyun
National Taichung University of Education
MEDITATION 3
dolcevita.art@googlemail.com





Luo Yuan
Beijing Technology and Business University
Power of rotation
39210388@qq.com



Lyu Kyungwon
Chungbuk National University
Dancing-space
lkwart@hanmail.net



Ma Yanxia
Tianjin Academy of Fine Arts
Gestos series
741956656@qq.com



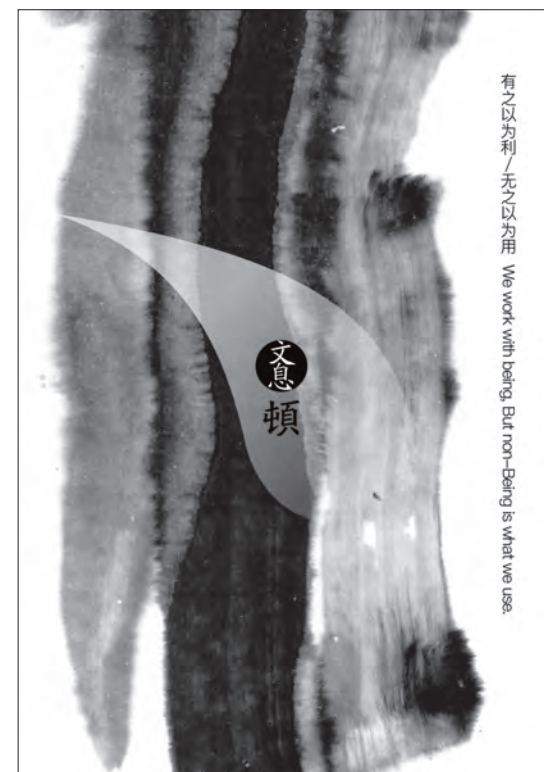
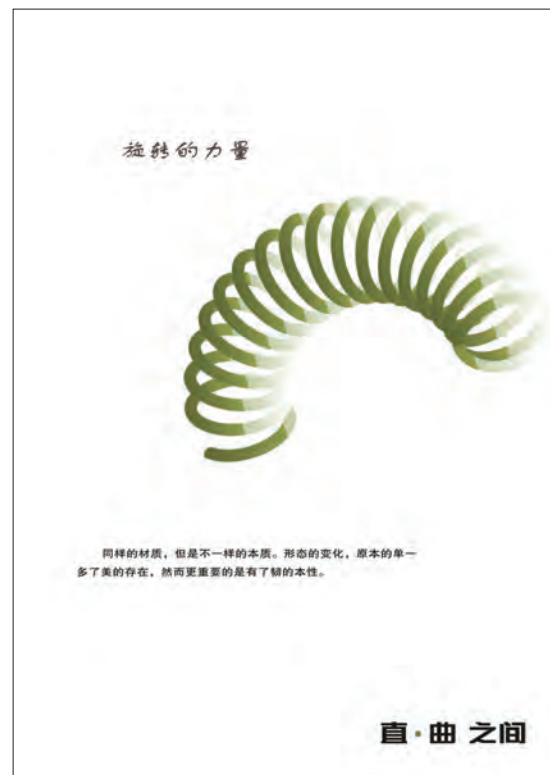
Ma Zhenyuan, Xu Jiazi
Dalian Medical University
Breath of words
423529955@qq.com / 77519047@qq.com



Makino Takumi
Meisei University
Untied Outline
takumi.makino@meisei-u.ac.jp



Maruyama Matsuhiko
Tamagawa University
Colors 2016
m.maruyama@art.tamagawa.ac.jp





Minamikawa Shigeki
 Okayama Prefectural University
 RA ver.-U
 m3304@dgn.oka-pu.ac.jp



Miura Keiko
 Hokkaido University of Education
 stitches_take a bath
 miura@finch.jpn.org



Momose Hiroyuki
 Sangmyung University
 impulse of life
 momonosonata@hotmail.co.jp



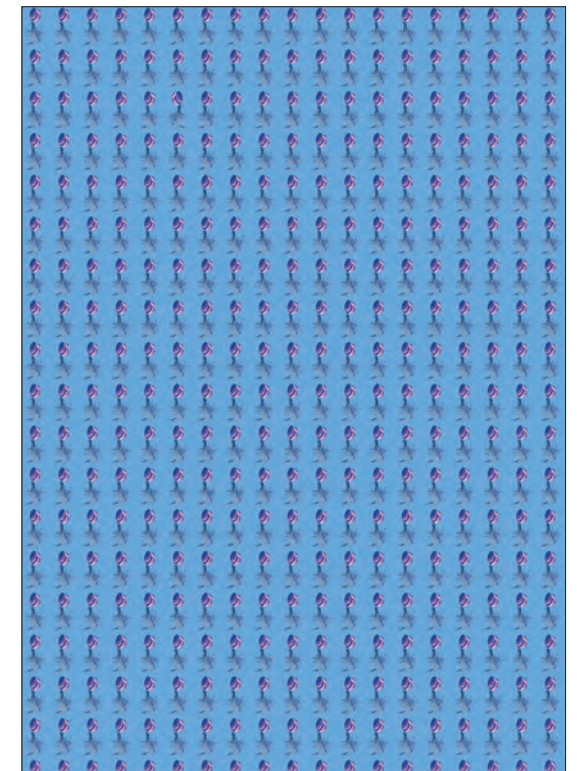
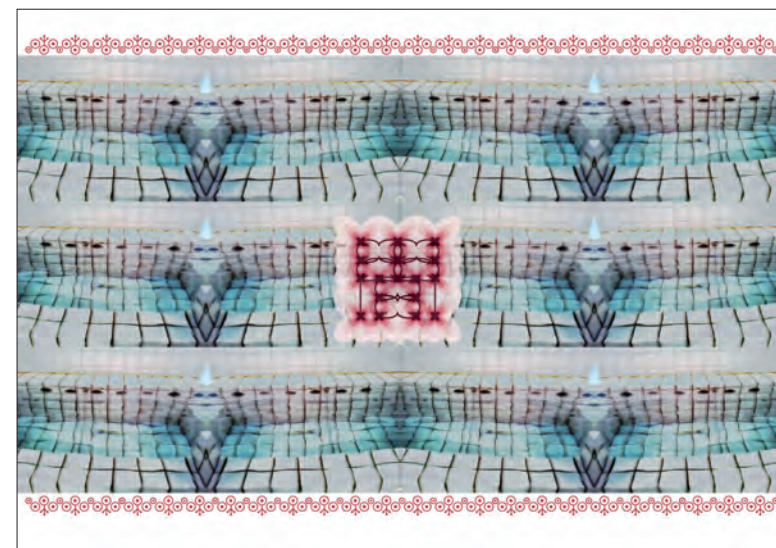
Moon Jungmook
 Sangmyung University
 Kumsan_exhibition
 j5262@smu.ac.kr



Moon Sungjun
 Paichai University
 Diaphragm Work
 june@pcu.ac.kr



Moon Sunyoung
 Sam Bong Chemical Co., Ltd.
 Hidden
 sdali33@naver.com





Nakajima Chie
 Tamagawa University
 "MA" Sri Lanka
 nakajima@art.tamagawa.ac.jp



Nakamura Shotaro
 Tokyo Gakugei University
 SOMETHING TELLS ME - 03
 koromochi930@gmail.com



Narita Yoshihiro
 Hokkaido University
 Between walls in Riga
 ynarita@eng.hokudai.ac.jp



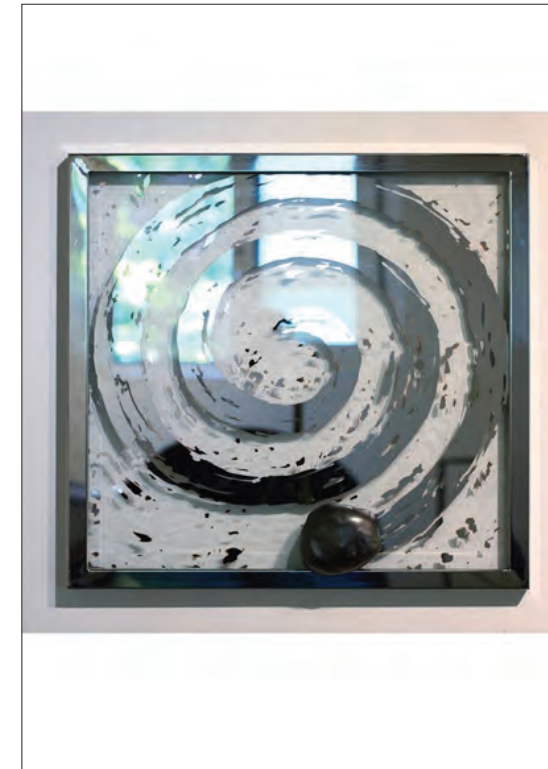
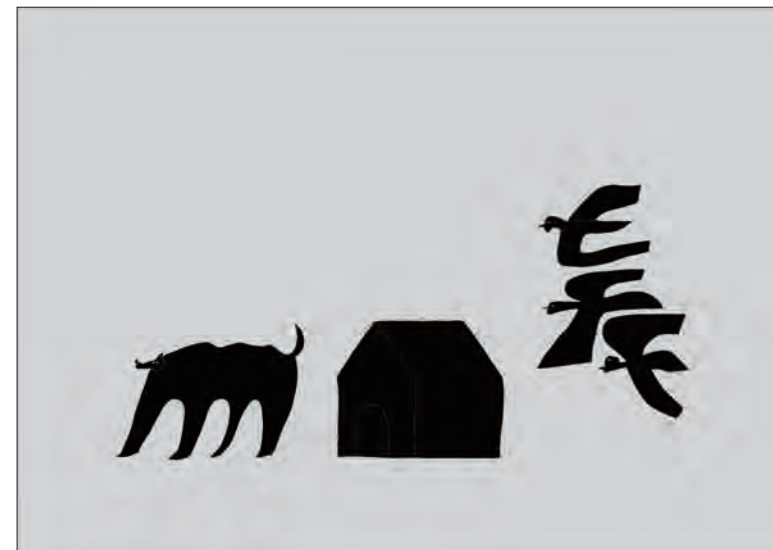
Noh Seungock
 Sungshin Women's University
 The flow of space
 noseungok88@gmail.com



Obara Issei
 Tokyo Gakugei University
 human
 dosukebearjr@gam@docomo.ne.jp



Oh Cheolhoon
 Jeju National University
 branch of torreya
 jch5@jejunu.ac.kr





Oh Sechul
Paichai University
From the sea Yellow
photo537@pcu.ac.kr



Oshima Naoki
Takushoku University
YOTSUME-AMI
ocean@idism.com



Ouyang Yi
National Kaohsiung Normal University
PM2.5 with Mythological Figures No.1
yvonne.oy@gmail.com



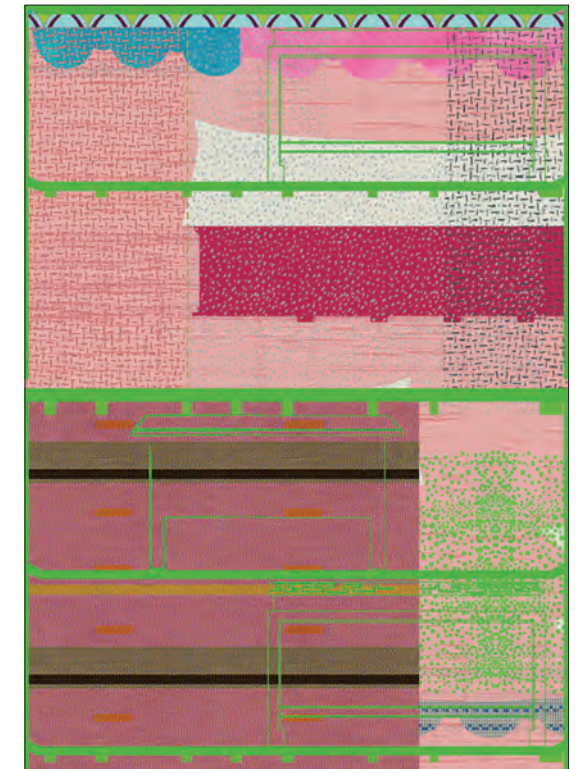
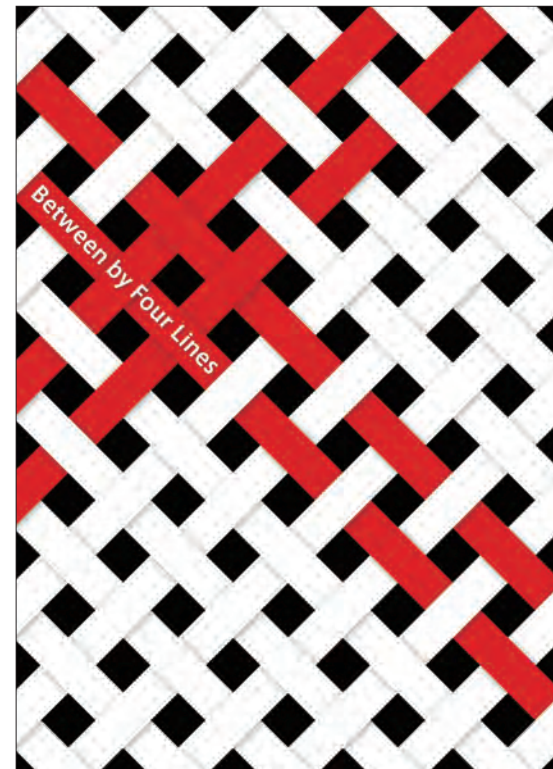
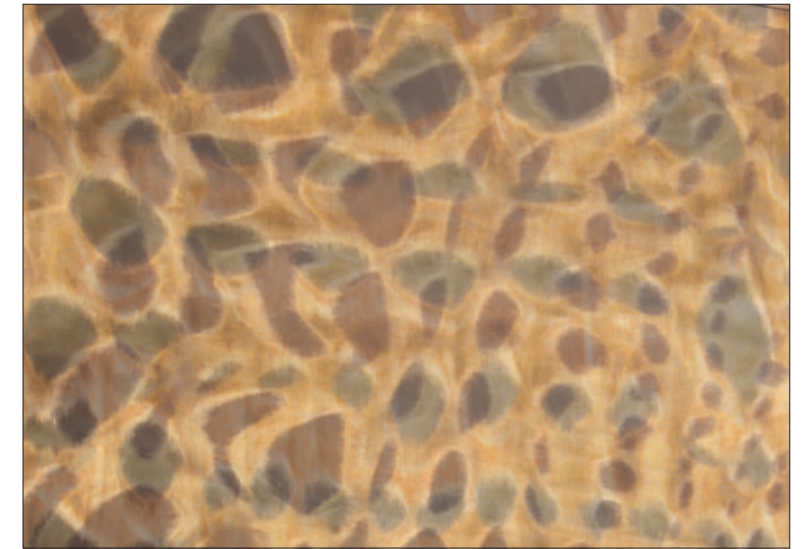
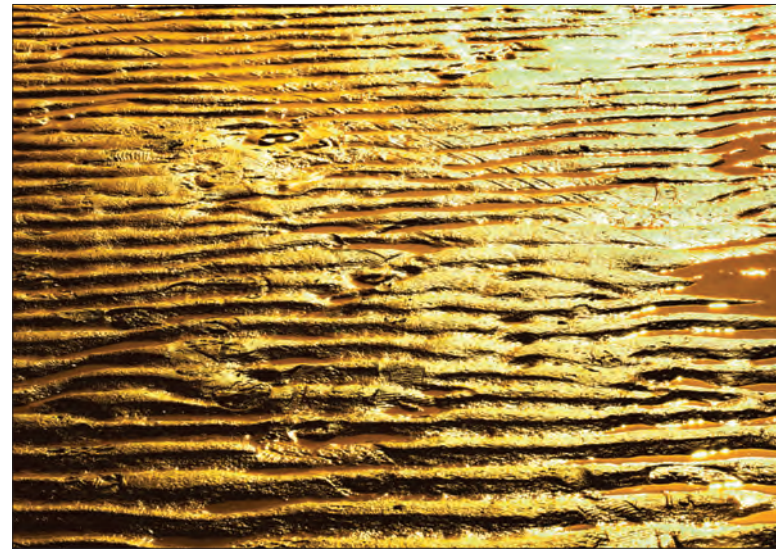
Park Haerim
Konkuk University
restructure the distance or space from an element to another one
network5163@gmail.com



Park Moonhee
Sangmyung University
Relation II
moon451@smu.ac.kr



Park Sohyoung
Chungang University
Room & Space
sohy@cau.ac.kr





Park Soyoung
Konkuk University
City of Building
scenart@naver.com



Park Sunmi
Konkuk University
Beauty & Balance
sunmipark@kku.ac.kr



Qiu Yang
Tianjin Academy of Fine Arts
A MOMENT IN TIME
894484743@qq.com



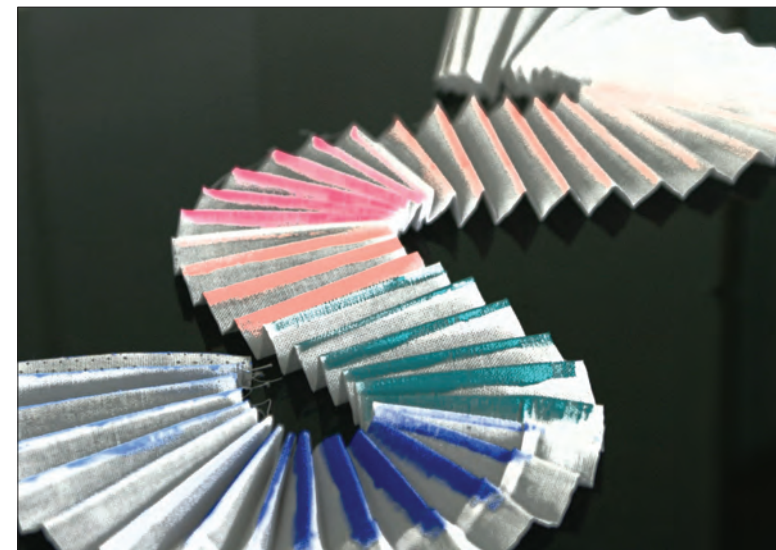
Ra Jeeyoung
Sangmyung University
pa.1611
jyra@smu.ac.kr



Ren Chunlian
Tianjin Academy of Fine Arts
Accumulation
1072318838@qq.com



Ren Yu
Tianjin Academy of Fine Arts
Between people and society
574031603@qq.com





Rha Sooim
Sangmyung University
FRAME 02
sina@smu.ac.kr



Rhee Myungsoog
Konkuk University
The Middle
rhee3684@naver.com



Rhee Taelim
Namseoul University
Metaball Geometry
taelimrhee@gmail.com



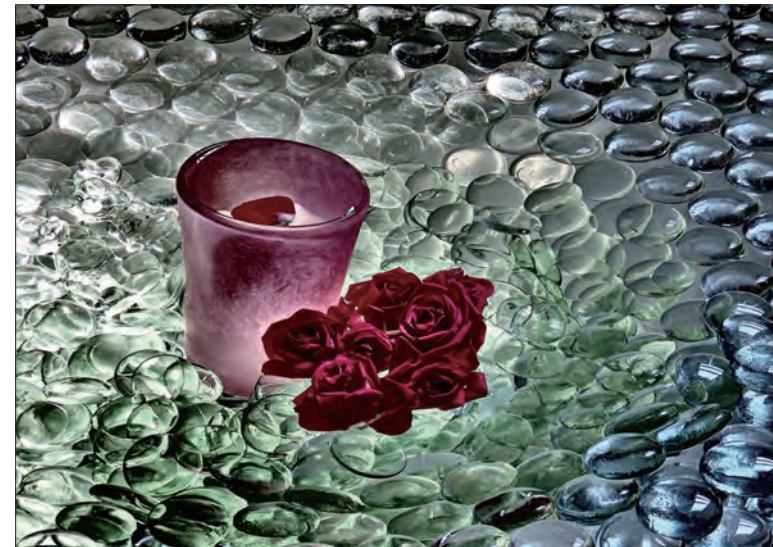
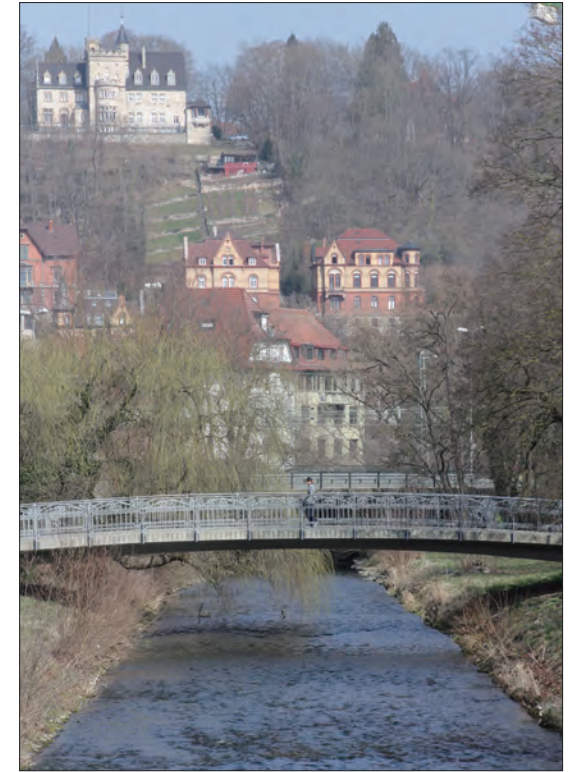
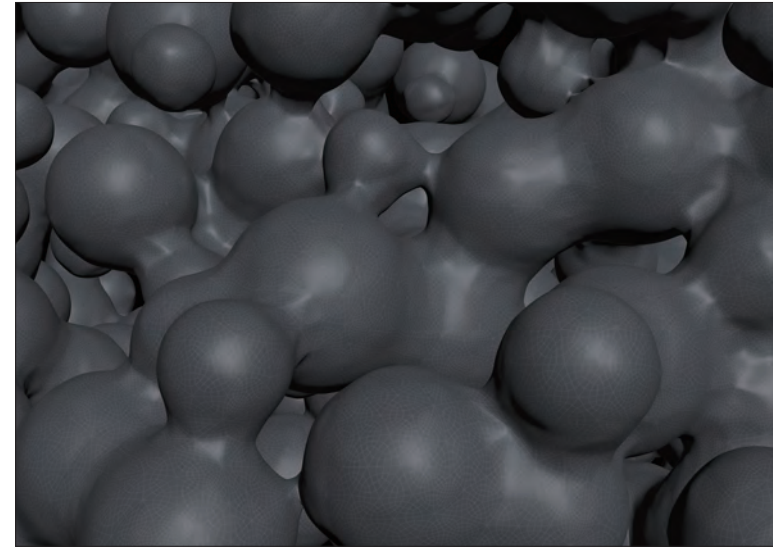
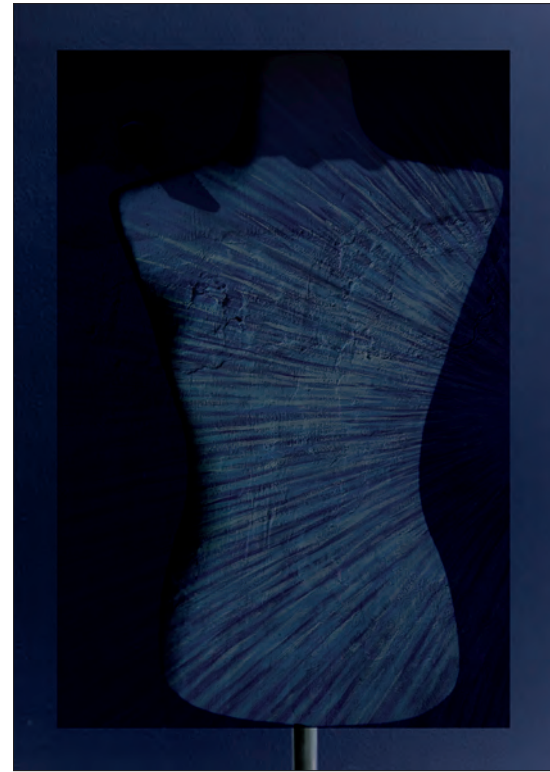
Saito Naomasa
Koa Glass Co.,Ltd.
Between 3
cybsc047@yahoo.co.jp



Sano Tohru
Photographer
Nature, Living place, and Human
sanoru@mtj.biglobe.ne.jp



Seo Dongjin
Sangmyung University
Relative Gap
sdjin@hanafos.com





Seo Dongkeun
Sangmyung University
relation 4
seo49@smu.ac.kr



Shen Lu
Tianjin Academy of Fine Arts
Between Space
565474303@qq.com



Shen Xiaoping
Tianjin Academy of Fine Arts
COLOR, SPACE AND WORDS
2935945835@QQ.COM



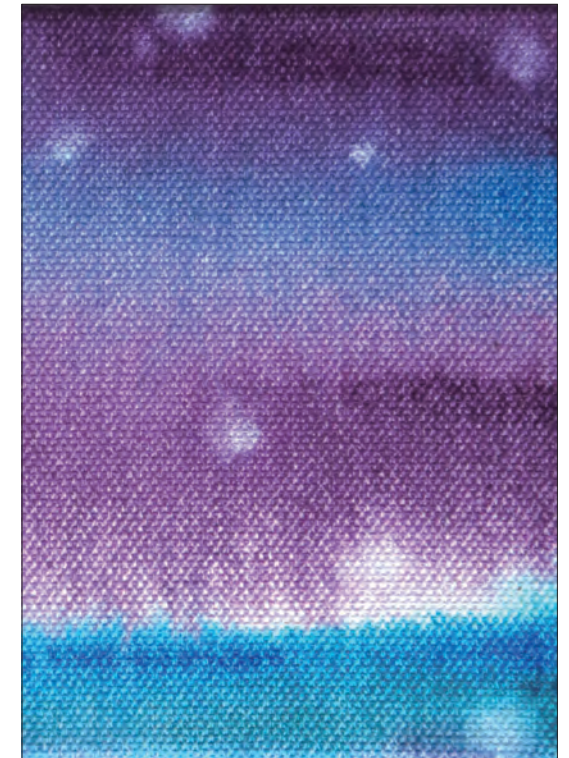
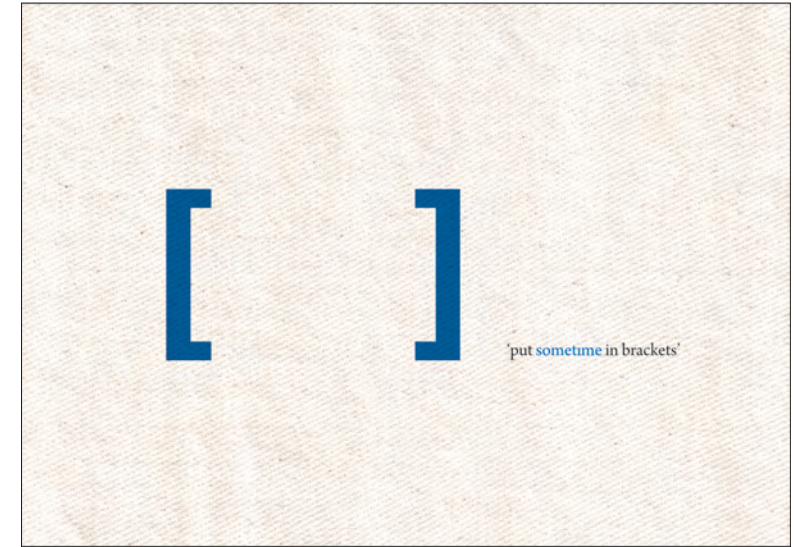
Shi Chengxin
Shandong Science and Technology University
symbiosis
389138171@qq.com



Shim Bokseob
Chungbuk National University
put sometime in brackets
illusion@cbnu.ac.kr



Shimoguchi Miho
Kyoto Koka Women's University
Play of Water 2016-04
shimoguchi@mail.koka.ac.jp





Shin Janghee
Kyungsung University
Stripe Effect III
sjh0919@ks.ac.kr



Shin Kyeok
Korea National University of Transportation
niche 4
koshin@ut.ac.kr



Shin Yoonjhin
Sangmyung University
Reminiscence_2
juju@smu.ac.kr



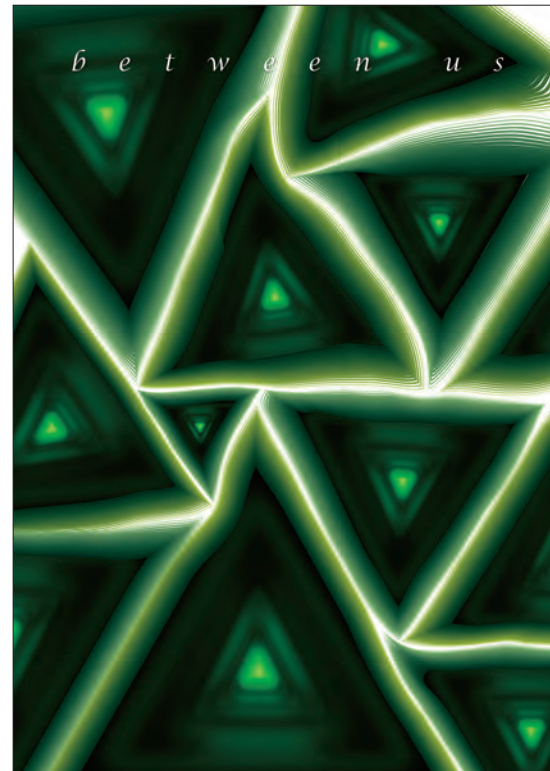
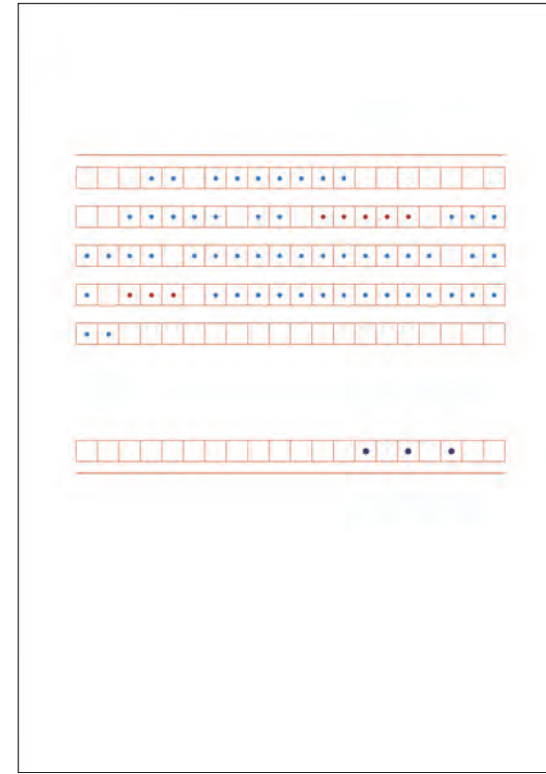
Shinohara Toshiro
Fukuoka University of Education
Off-street I 603
sinohara@fukuoka-edu.ac.jp



Shu Chunchieh
Yu Da University of Science and Technology
A Cicada Dream
chings01@ydu.edu.tw



Shur Kiheun
Gachon University
reading between lines III
shurson2@naver.com





Song Gyaeyoung
Chungnam National University
symmetrical pleats cube
chowchow65@yahoo.com



Song Jungyu
Sangmyung University
Imagery of Spring
junkys@hotmail.com



Song Shan, Mu Qing
Tianjin Academy of Fine Arts
Mirror positive crown
1092342967@qq.com / 799942354@qq.com



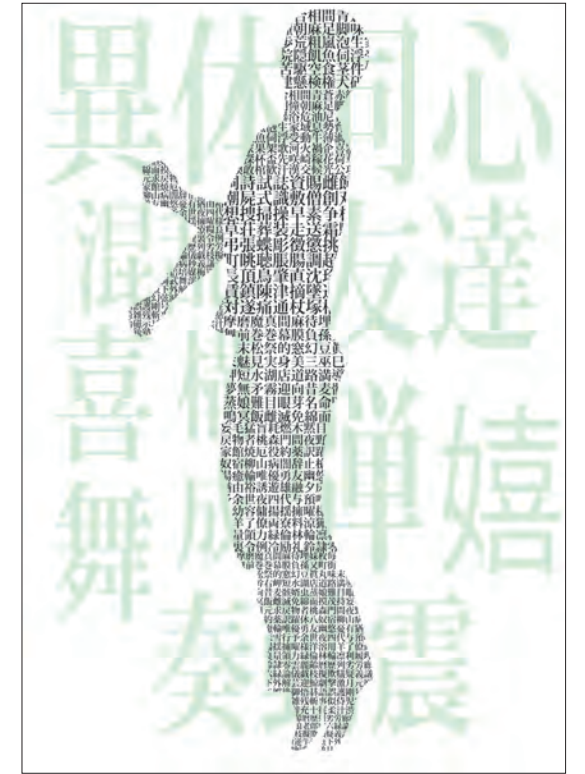
Su Yafen
Tainan University of Technology
Cowhide-Dyed Crystal Dye
t30013@mail.tut.edu.tw



Suefusa Mamoru
Hiroshima Kokusai Gakuin
"MA" PROCESS 4
s159201@edu.hkg.ac.jp



Suh Seungyeon
Sangmyung University
Hoshino Tomam
ssy2003@hanmail.net





Sun Debo
Shandong University of Science and Technology
Do Visivel ao Invisivel
178519985@qq.com



Sun Han
Tianjin University
SPACE
371052213@qq.com



Takahashi Nobumasa
University of Aizu
Seen by Gap 16-u
takahasi@j.c.u-aizu.ac.jp



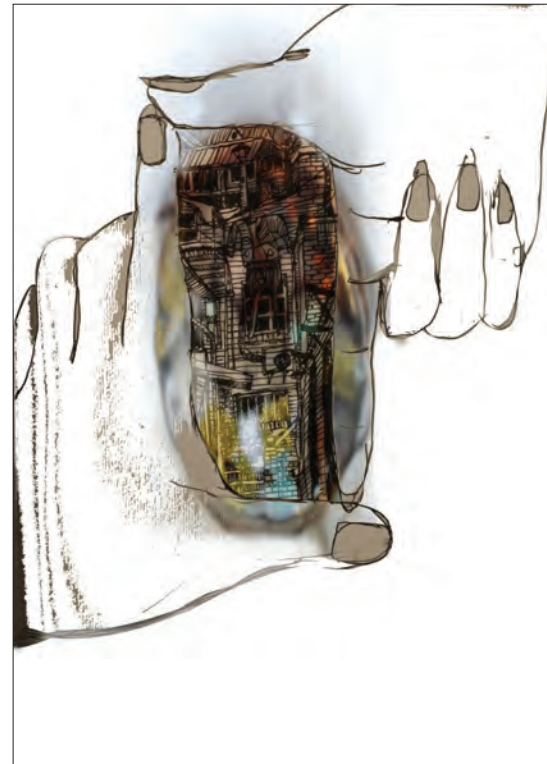
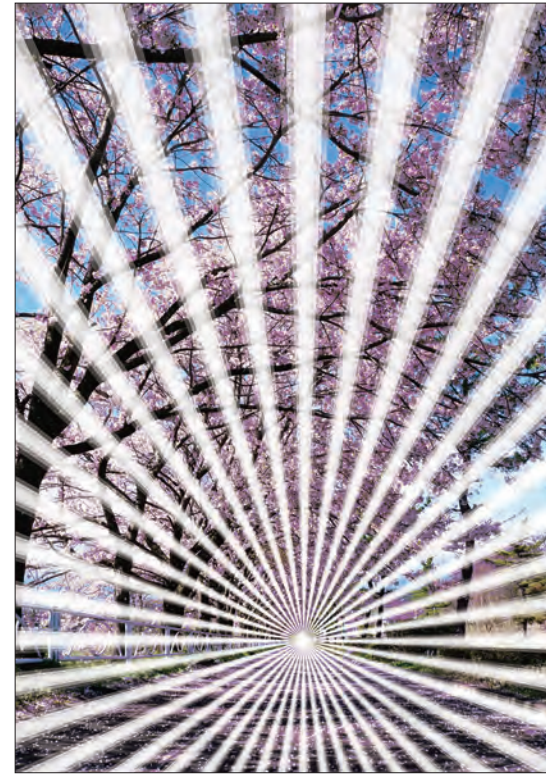
Tsai Chengi
National Taipei University of Business
Symbiosis-Space
bruce0517@yahoo.com



Tsai Janson
Jinwen University of Science and Technology
Between East and West-Concurrence
janson@just.edu.tw



Tsai Sungte
National Kaohsiung Normal University
Double Ninth Festival
songder0909@gmail.com





Tsutsumi Emico
Printmaking Artist
"ASANOHA" WS
info@otoegaku.jp



Um Sohee
Gangnung Wonju National University
Phantom
simple8401@gwnu.ac.kr



Wang Danhong
Tianjin Academy of Fine Arts
Color stripe
1025213173@qq.com



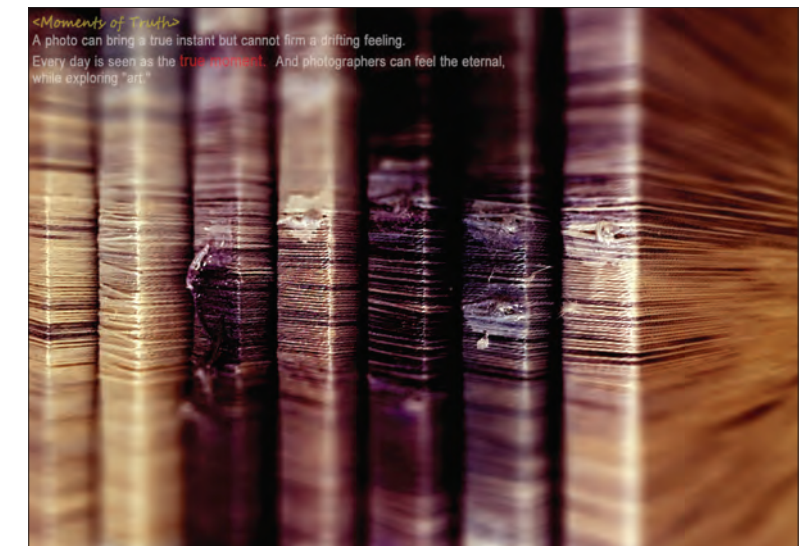
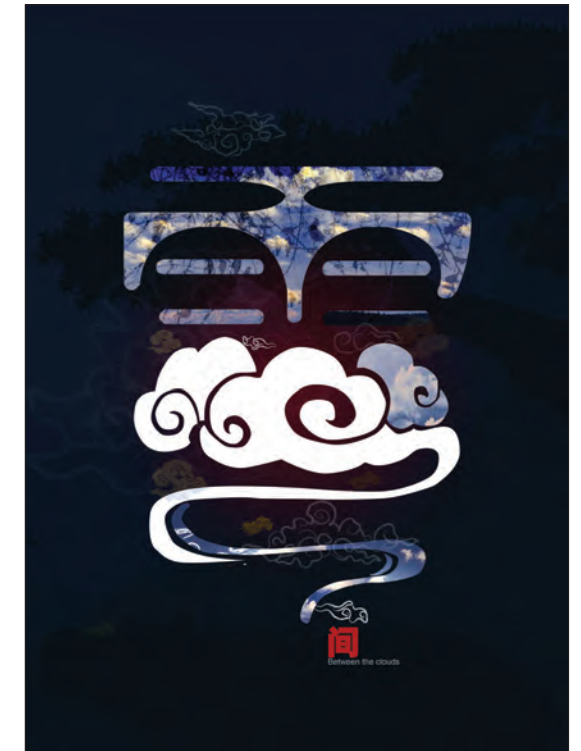
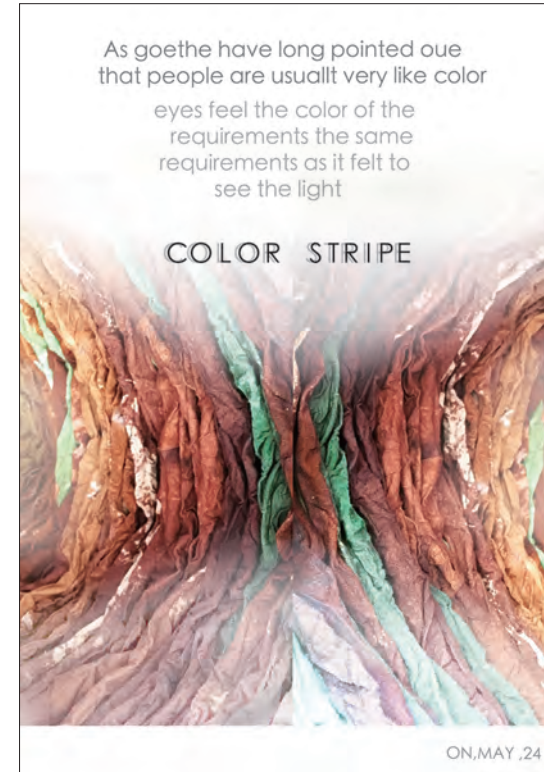
Wang Liang
Sichuan University
time
18428359878@163.com



Wang Meili, Li Yanmei
Tianjin Academy of Fine Arts
Between
45331764@qq.com / m13920306963@163.com



Wang Mengge
Tianjin Academy of Fine Arts
Moments of Truth
741956656@qq.com





Wang Nan
Tianjin Academy of Fine Arts
Instant
515885243@qq.com



Wang Nannan
Tianjin Academy of Fine Arts
Standard raw apple series of purple tone
1340453963@qq.com



Wang Shuhuei
Mingdao University
Whisper nature-Water of mountain Stream
angelawang36@gmail.com



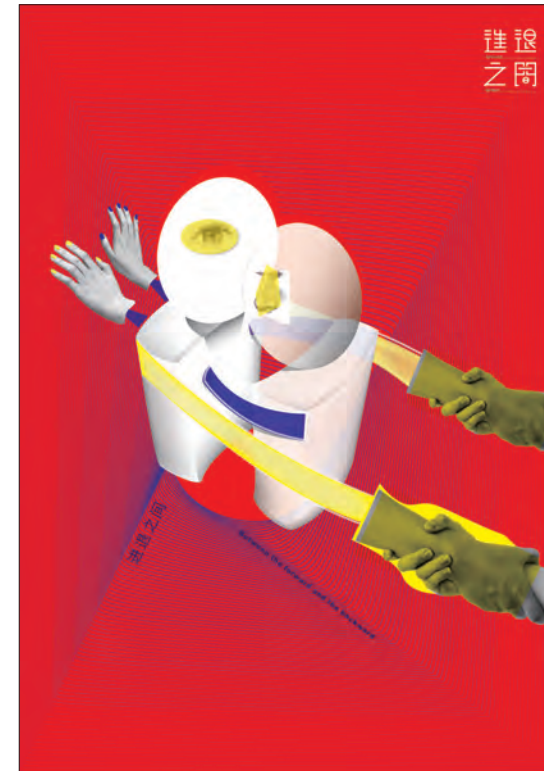
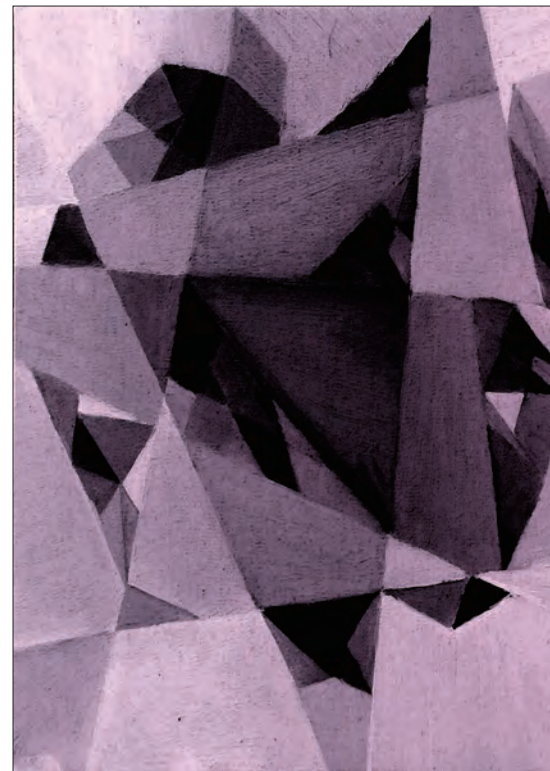
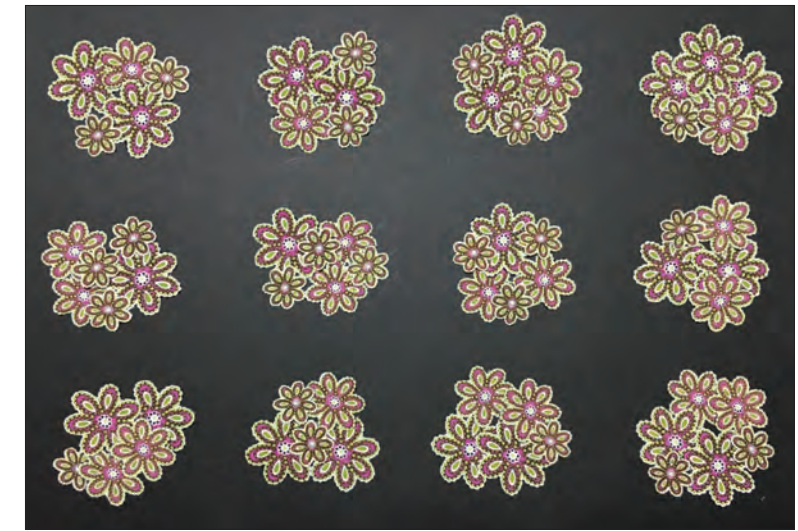
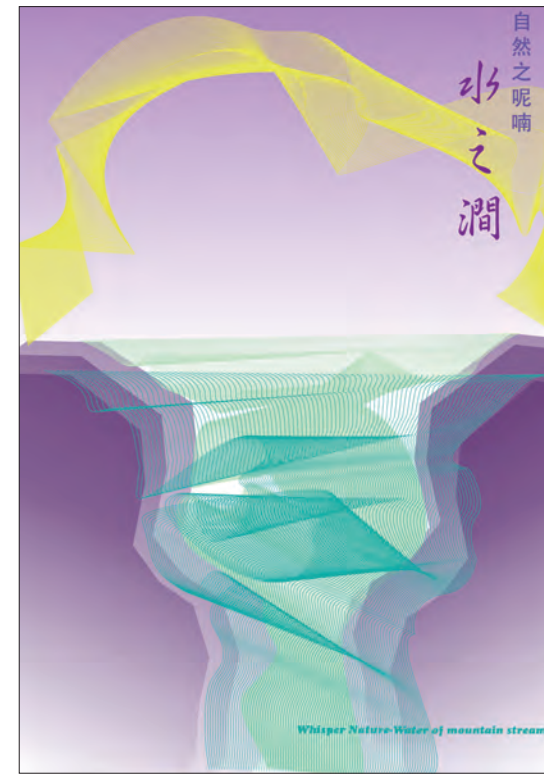
Wang Yuexin, Cheng Jie, Zhou Jiajia, Wu Yumeng
Jilin University of Arts
Between the forward and the backward
337545446@qq.com / 1037963809@qq.com / 1981959113@qq.com / 419421508@qq.com



Won Myungsim
Konkuk University
Bouquet
myungsim@kku.ac.kr



Won Yunkyung
Ewha Woman's University
Repetition_160703
styler3w@gmail.com





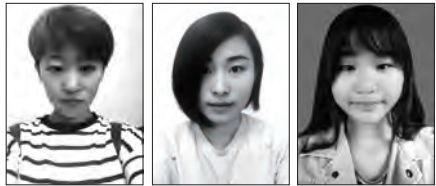
Woo Hyunri
Gangnung Wonju University
attract-4
woo405@gwnu.ac.kr



Wu Chongchong
Sichuan University
UNTILE
1072202637@qq.com



Wu Hsiaoling
National Taipei University of Business
Atlantis
hsiao-ling@ntub.edu.tw



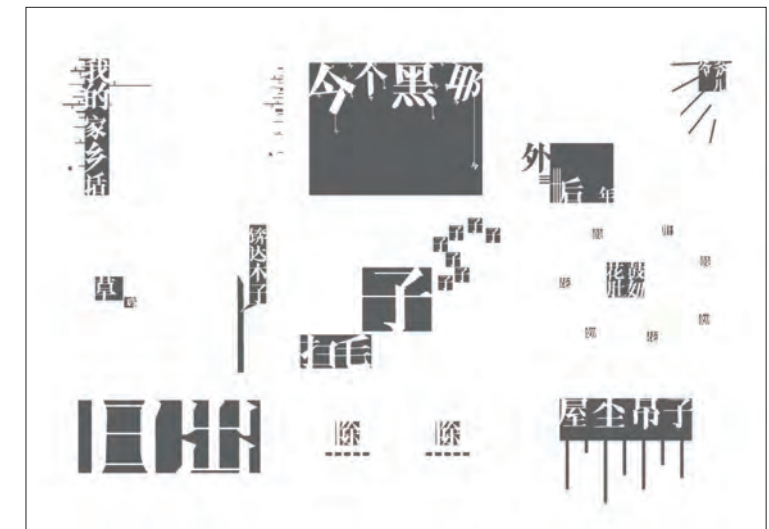
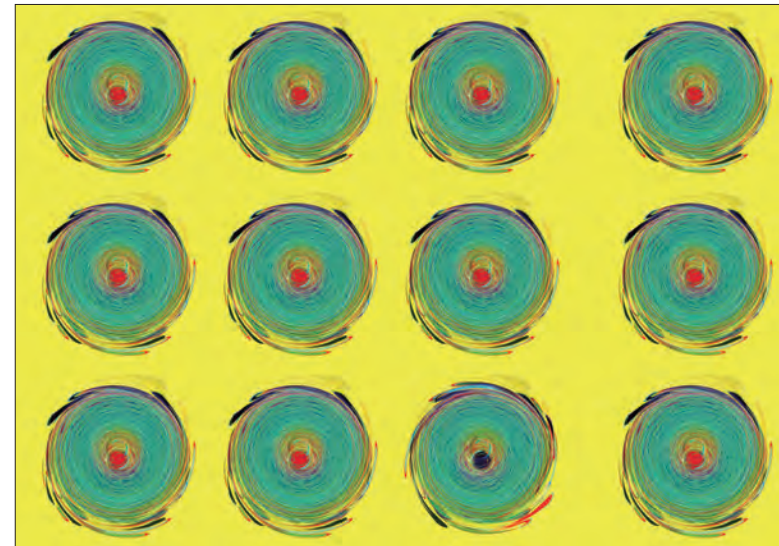
Wu Tingting, Sun Wanting, Shen Juan
Jilin University of Arts
Between
wtt5.11@qq.com / 1789251173@qq.com / 594903270@qq.com



Wu Yan
Jilin University
CHINESE NEW YEARS
yaailuck@163.com



Wu Yaru
Tianjin Academy of Fine Arts
My Native Dialect
1216392232@qq.com





Xin Shizhen
Tianjin Academy of Fine Arts
Color is life
1009458454@qq.com



Xue Ming
Tianjin Academy of Fine Arts
And
xueming0000@163.com



Xue Yan
Tianjin Academy of Fine Arts
Interlude
Xueyan1102@sina.com



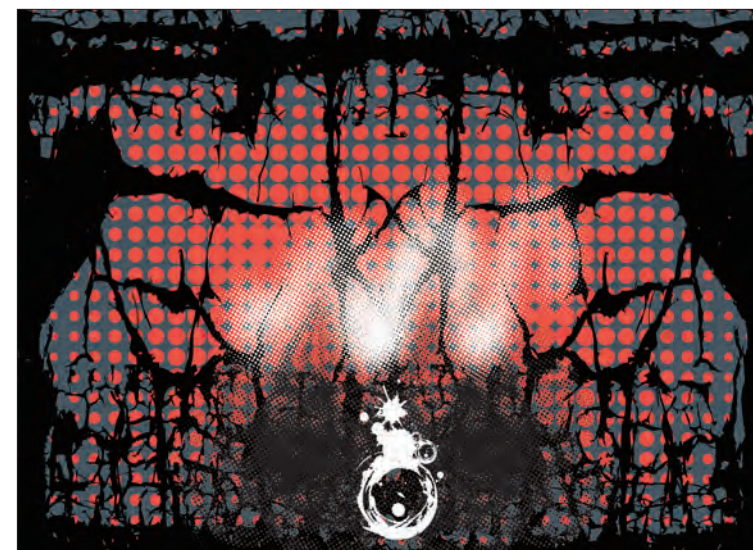
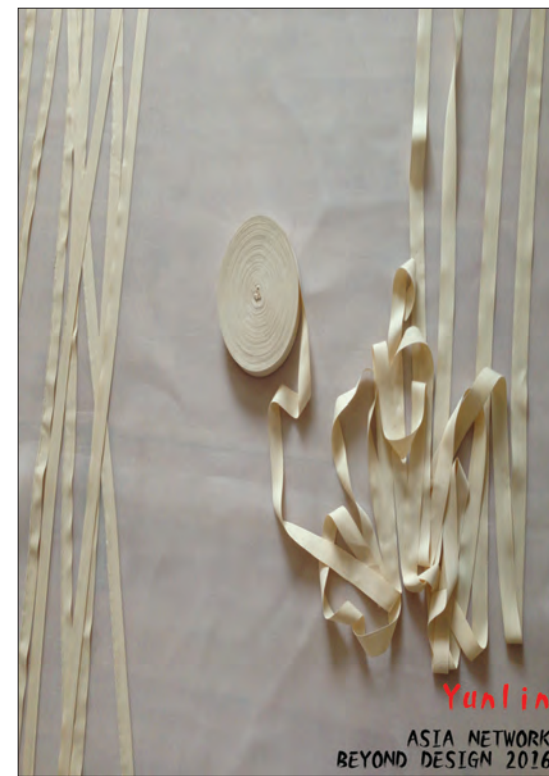
Yang Chaofu
Shute University
Space of Dot and Lines
ychaofu@gmail.com



Yang Chuang
Sichuan University
Lock
499620701@qq.com



Yang Fang
Tianjin Academy of Fine Arts
Worship of the sun
447152232@qq.com





Yang Leen
Sangmyung University
Between31610
yangleen@hanmail.net



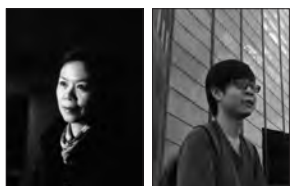
Yang Shiuaruei
National Taiwan University of Art
CHANGE QUALITATIVELY
yangtw5@hotmail.com



Yang Xiaoying
Tianjin Academy of Fine Arts
The One Is Infinity2
675651464@qq.com



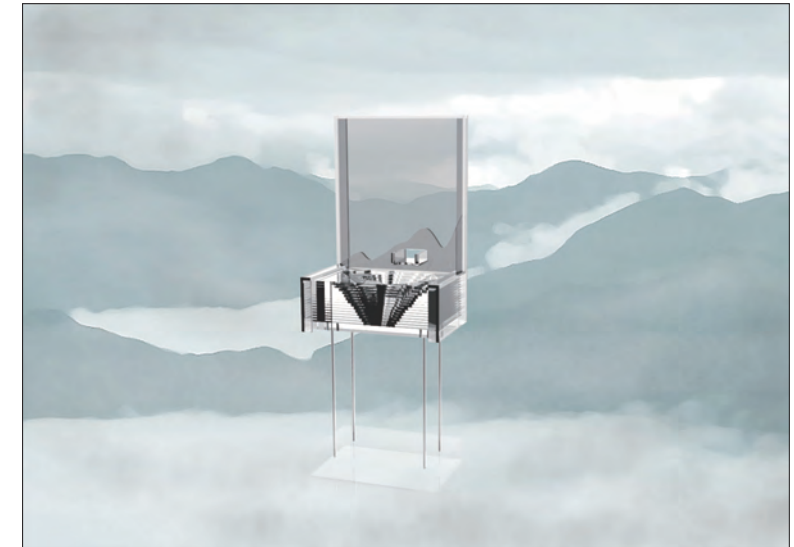
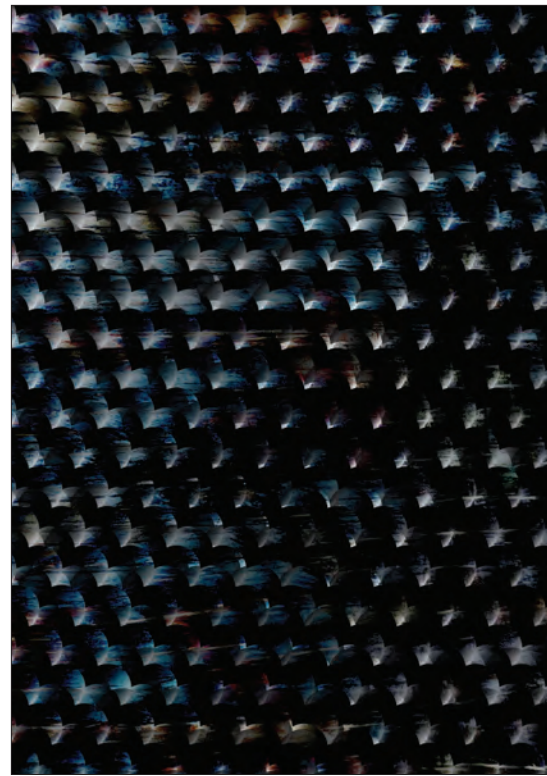
Yang Yu
Tianjin Academy of Fine Arts
A FRUITLESS APPROACH
625446742@qq.com



Yeh Moli, Juo Keyan
Foguang University
2016 Time Space
1101moli@gmail.com



Yeom Hyesoo
Sangmyung University
fabric & form 15
yhs812@smu.ac.kr





Yi Wonje
Sangmyung University
CITIES + TYPES : Granada + Albertus
wonje@smu.ac.kr



Yin Dashun
Tianjin Academy of Fine Arts
Compose moral character back to art
770263953@qq.com



Yoo Boomee
Sangmyung University
Bowl 16-03
yoobm@smu.ac.kr



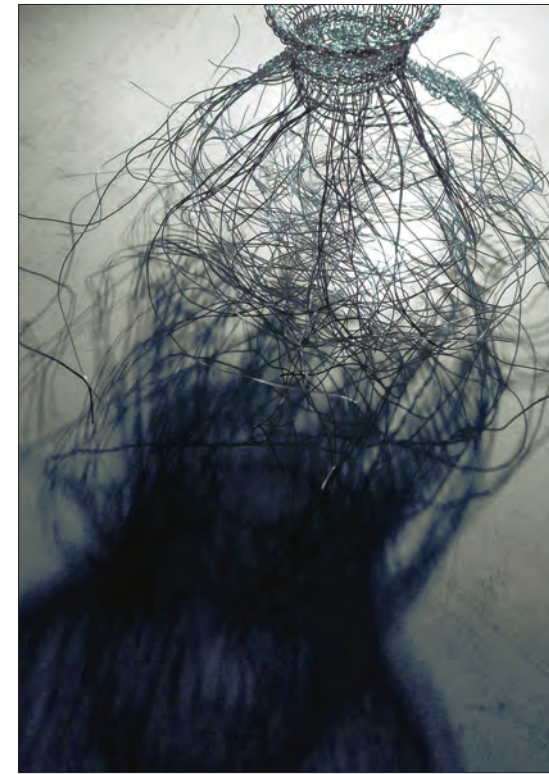
Yoo Dongkwan
Sangmyung University
16-Once Upon a Time-04
ndky@smu.ac.kr



Yoo Hyunah
Sangmyung University
Between Reality and Perception II
yha@smu.ac.kr



Yoon Yeojong
Sookmyung Women's University
Individualism_people
h7023@hanmail.net





Yue Lin
Jilin University
Between
398535988@qq.com



Zhang Huiying
Tianjin Academy of Fine Arts
And
zhanghuiying1120@163.com



Zhang Lizhu
Freelancer
Time
cc_lizhu@163.com



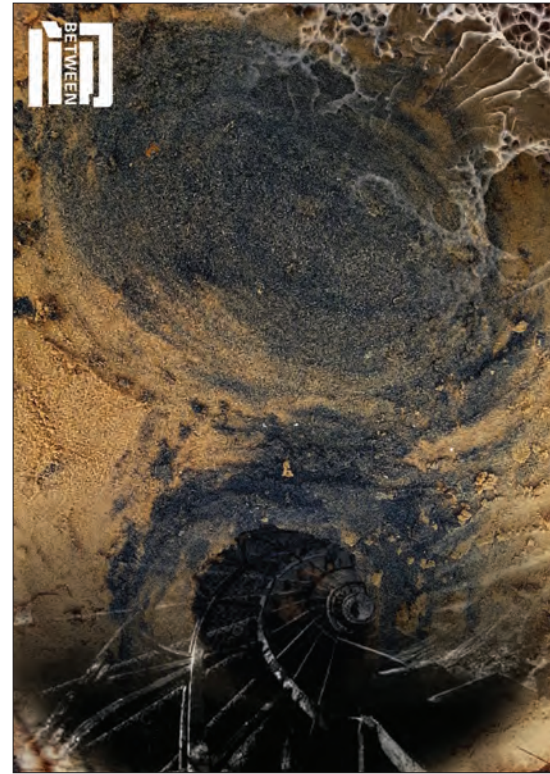
Zhang Puhua
Sapporo City University
Between Silver and Red
Zhang@scu.ac.jp



Zhang Shijia
Tianjin Academy of Fine Arts
CAN NOT DISORDERLY
376005074@qq.com



Zhang Xi
Tianjin Academy of Fine Arts
Dong Jing Zhi Jian
530750634@qq.com





Zhang Xin, Zhang Ying
Tianjin Academy of Fine Arts
Subjektive Space
462547416@qq.com / yingel@126.com



Zhang Xingchen
Tianjin Academy of Fine Arts
The male and the female · ambiguous
582751271@qq.com



Zhang Xingchen, Li Youkai
Tianjin Academy of Fine Arts
Spring breeze between smooth and streams
582751271@qq.com



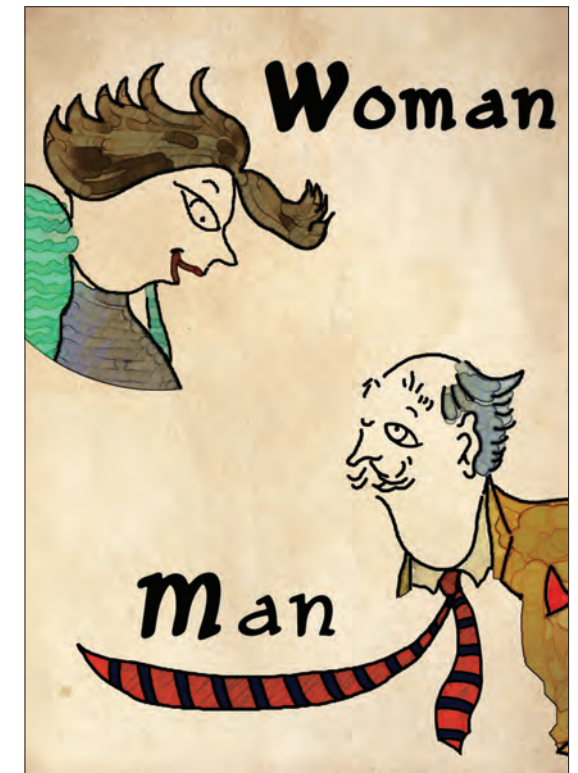
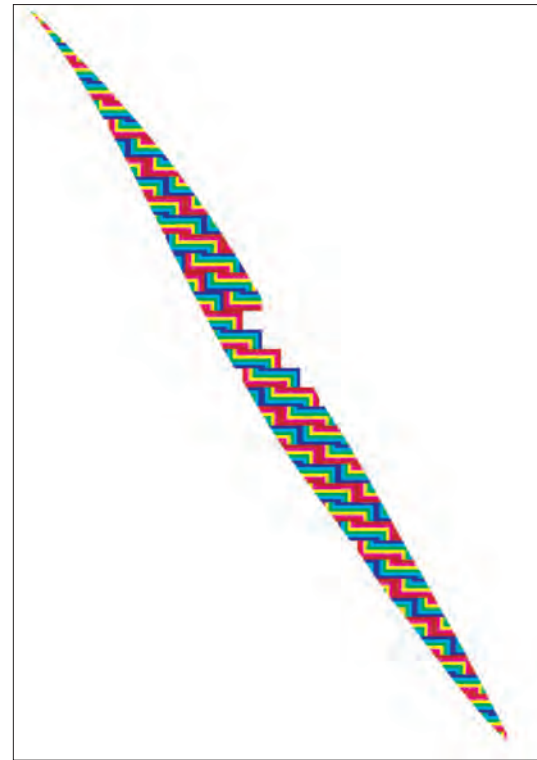
Zhang Yiran
Tianjin Academy of Fine Arts
Building
1027345094@qq.com



Zhao Fangqi
Tianjin Academy of Fine Arts
Pottery and ink painting
572750379@qq.com



Zhao Jing
Tianjin University
Between Men and Women
zhaojingliz@163.com





Zhao Yanfei
Tianjin Academy of Fine Arts
Hold
474338650@qq.com



Zhao Yucheng
Konkuk University
Time between (reversal)
zhaoyuchengbox86@gmail.com



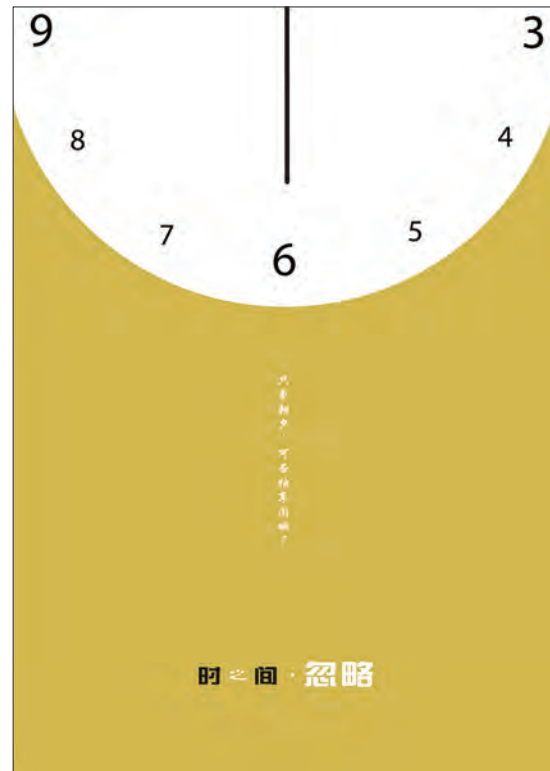
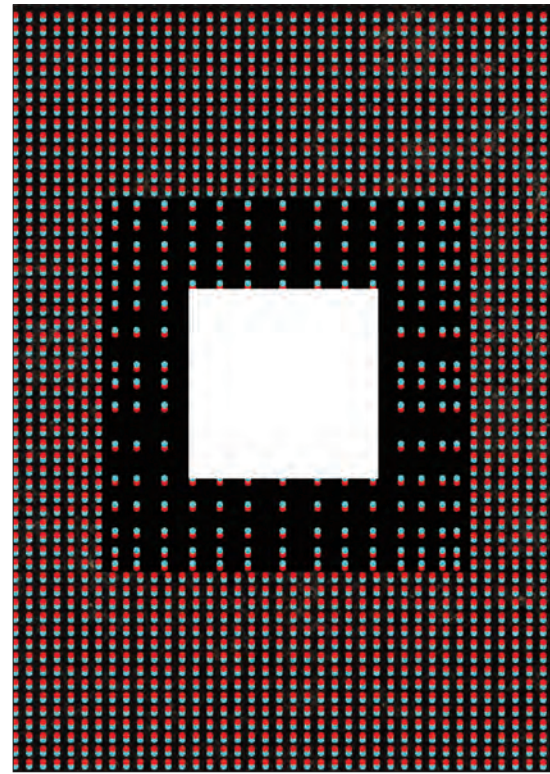
Zhi Xiaoxiang
Tianjin Academy of Fine Arts
Between
420209160@qq.com



Zhong Lei
Tianjin Academy of Fine Arts
18 Weapons of Kung Fu
823725575@qq.com



Zhu Yiyue
Tianjin Academy of Fine Arts
Agglomerate series
2860655628@qq.com



2016 ANBD
Examination Review



Cho Baemoon

심사의 기준은 공동주제와의 적합성을 가장 중요하게 고려하였습니다.
선별한 작품들은 기본에 철저하면서도 실험성과 현대적인 감각을 가졌다고 보여집니다.

Professor, Keimyung university
zovaemoon@naver.com



Chou, Chun-Cheng

設計做為達到亞洲新的整體文化認同，探索未來發展方向的方法上，必須在作品概念及呈現達到文化溝通、文化提升等目的。關於「間」本次主題，對於如何以文化為背景，以視覺美學探討風格市場性，能夠深入淺出的表述作品意涵，評選上是以直觀易解，來度量設計者作品良窳。

Art director, Pave Brand Design Co., Ltd.
gearge55@gmail.com



Guo Zhenshan

评审之前认真研读募集书理解今年亚超共同主题“间”的涵义，按照组委会要求对原创性进行审查，然后根据对共同主题的理解、创意设计和创意表达、作品艺术性及其最终效果等方面评选出优秀作品25件。最后根据组委会要求又在25件作品中筛选出除中国作品外的20件优秀作品。

Professor, Tianjin Academy of Fine Arts
624088625@qq.com



Hiroaki Nagai

表現というものは、正解というものがなく、様々な視点で評価されるものだと思っています。それを念頭において、3つの基準で選びました。
1. 課題に対して咀嚼し、そこから飛躍できているか?
2. 斬新さがあるか?
3. 四枚のポスターの魅力や美しさのバランスが取れているか?

Professor, Tokyo Zokei University
ng@nginc.jp



Jeon Jongchan

ANBD2016의 주제인 「間」은 매우 철학적인 주제이다. 환경, 사물, 인간, 시간, 현상 등의 관계성에 대한 개념이며 세상의 모든 만물은 서로의 관계성으로 인해 존재감을 가진다. 이와 같이 약간은 철학적이고 난해한 주제임에도 불구하고 많은 작가들이 자신들의 독특한 해석을 바탕으로 참신하고 독창적인 작품을 출품했다고 생각한다. 특히 컴퓨터그래픽을 활용한 작품비율이 예년에 비해 증가하고 있으며 활용하는 소프트웨어도 점점 다양해지고 있는 느낌이다.

Professor, Hansung University
jcheon45@hansung.ac.kr



Komatsu Futoshi

文化や言語の壁を越えて伝わってくるメッセージとそれを支える構成員、獨創性を審査基準の一つとしました。各地域の出品者、及び審査員による意識の総体によって、アジア4地域の根底に流れる造形美や現代に生きる私たちが抱く共通的な社会意識が表出することを楽しみに審査に取り組みました。

Associate Professor, Koriyama Women's College
foot@koriyama-kgc.ac.jp



Liao, Wei-Ming

一、作品原創性：作品獨特的原創性高低，會議評審決定是否繼續理解與探索其作品內涵。
二、設計品質：任何設計專業領域，均有其評斷作品精緻度與完成度的普遍共識。
三、美學品味：作品是否能呈現來自文化所富賦予的美感形式，品味以及豐富的想像力。
四、人性：作品是否能更積極影響觀者或使用者，在感官與情感經驗上的共鳴。

Professor, National Taiwan Normal University
melvyn.liao@gmail.com



Su dawei

在评审中获选作品必须以本届ANBD展以“间”为共同主题，体现ANBD“亚洲、合作、超越、创新”的目标和主旨作用，评审依据认为作品就是用设计讲故事，创新设计既是超越。强调作品原创性，震撼性、关联性！

Associate Professor, JiLin University of the Arts
114297317@qq.com



Taniguchi Hiroki

全体にはパソコンで処理したそのままの感じが強い作品と、テーマに関係なく制作しているように見える作品の応募が多く困っているのですが、今回もその傾向はあるものの「間」というむずかしいテーマにも拘らず、心が動く作品が例年よりも多かったような気がしました。

Professor, Tokyo Polytechnic University
thiroki@dsn.t-kougei.ac.jp



Tsai, Janson

1. 主題之掌握
2. 構想及概念
3. 構成形式
4. 表現技法與美感

Associate Professor, JinWen University of Science & Technology
janson@just.edu.tw



Wu Yibo

评审标准，一，符合对主题的诠释。作品应该很好的对主题进行诠释，以彰显主题的内涵和意境。二，创作角度的独特性。三，这一主题有很多创意的切入点，作品应该选取既符合主题内涵又能以独特的视角阐释主题辐射的范围。三，作品的原创性。参赛作品应该具有原创的精神和实质，以表达作者的观念，从而发扬创意视界的原创精神。四，视觉语言运用的独到和冲击力。在当代海报设计语言的多样性中寻找视觉语言的突破性与表现力，运用不同的视觉元素进行创作，语言、语法及语义准确且独到，符合当代设计的语境。

Associate Professor, Jilin University of the Arts
264115769@qq.com



Xue Ming

2016年度ANBD共收集作品262件,总体印象作品水平高于往届,大部分作品对主题“间”的理解深入准确,特点鲜明\表现语言多样\艺术性强,特点是用设计的思维进行艺术创作,充分体现出设计与艺术的完美结合.另一个特点是地域文化特征鲜明.但是也有地域间文化互相借鉴融合的态势

Professor, Tianjin Academy of Fine Arts
xueming0000@163.com



Ynag, Shiuan-Reui

本次參展的作品表現媒材含括平面、攝影、產品、織品等多種類型，評選實屬不意。評審的原則主要是依據作品是否能清楚的傳達「間」的概念，而在創意上有其新奇的視點、表現技法上有其獨特的處理方式與純熟度，最後更需具備有令人賞心悅目的視覺美感。

Associate Professor, National Taiwan University of Arts
yangtw5@hotmail.com



Yoo Boomee

주어진 주제를 인간의 삶에 비추어진 '間'이라는 개념으로 해석하고 각 국가의 문화적 감성을 담아 심도 있게 표현한 작품을 다수 볼 수 있었음. 사물이나 공간의 문제뿐만 아니라 개념적, 정서적 문제를 조형적으로 표현하려는 의도가 높이 평가됨.

Professor, Sangmyung University
yoobm@smu.ac.kr



Yoon Yeujung

한국, 일본, 중국, 대만이 중심이 되어 2007년에 발족한 ANBD가 올해로 10주년이 되는 시기에 심사에 참가하게 되어 뜻깊게 생각합니다.

이번 심사는 ANBD의 창립 목적에 부합하는 내용으로, 금번 전시의 주제인「間」을 시대적 디자인 트렌드를 리드하며, 작가적 관점에서 다양한 사고와 창의적으로 표현한 작품을 선별하였습니다. 또한, 특정 국가와 호(파일)에 치우치지 않도록 안배하여 심사를 하였습니다.

10주년을 맞아 앞으로 지역과 경계를 넘어 문화와 가치를 교류하는 보다 큰 단체로 성장해 나가길 기원합니다.

Professor, Sookmyung Women's University
h7023@hanmail.net



Yoshihiro Kishimoto

ANBDの応募作品のレベルの高さには驚かされます。今回もそうした作品群の中から、私なりの基準で審査を致しました。それは造形的な卓越性という視点です。絵画作品にせよデザイン作品にせよ、その質を支え表現のレベルの高さに繋げることができるのがそうした内容です。応募者の皆さんの今後のご活躍をお祈り致します。

Associate Professor, Kobe University
yoshiki@kobe-u.ac.jp

